

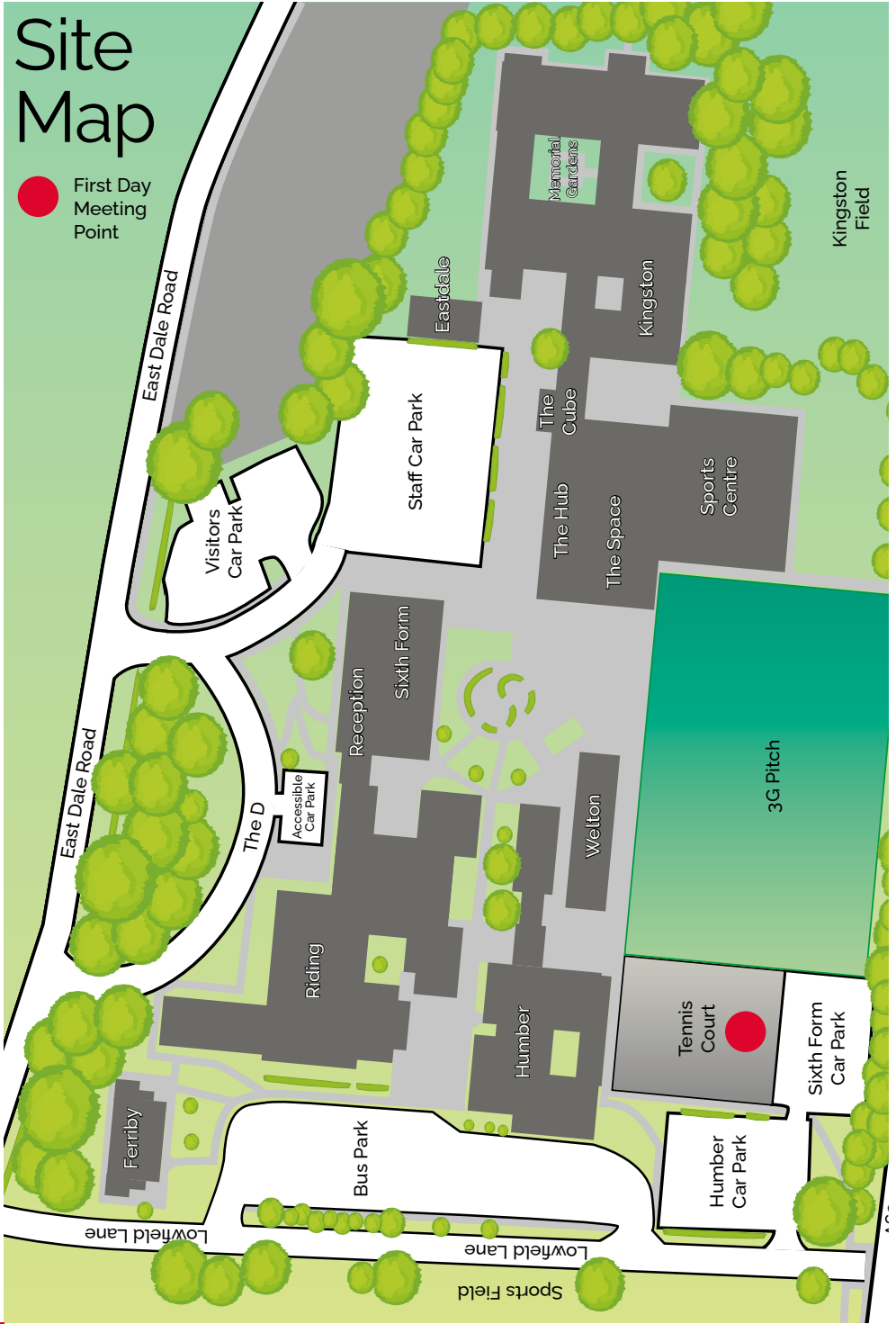


**SOUTH
HUNSLEY**
inspire · aspire

**Year 6
Handbook
2026**

Site Map

 First Day Meeting Point





Contents

INTRODUCTION

- 1** Site Map
- 3** Welcome
- 4** Our Shared Principles
- 5** Pastoral, Houses and Rewards

TRANSITION

- 6** The Transition Process
- 7-9** Induction Days and Evening

SCHOOL LIFE

- 10** What You Should Know
- 12** First Day
- 13-14** Travelling to School
- 15** Catering
- 16-18** School Uniform Policy
- 19** School Sporting Fixtures
- 22** Extra-Curricular Activities
- 23** Communication Between Home and School
- 24** Marketing

CURRICULUM

- 25-26** Curriculum and Personal Development
- 27** What Will Your Child Study in Year 7?
- 28** Homework

SUPPORT

- 29-30** SEND
- 31** Safeguarding and Inclusion
- 32** What Can You Do to Help Your Child?
- 33** School Library
- 34** Recognition

PROCEDURES

- 35** The Hunsley Way
- 36** Behaviour for Learning
- 37** Term Time Holidays
- 38** Home School Agreement
- 39** Checklist

ADDITIONAL

- 40** The South Hunsley Partnership
- 41-42** South Hunsley Sixth Form

Welcome to South Hunsley Secondary School

Welcome to South Hunsley School! With over 2000 pupils, including 400 in our thriving sixth form, we are a larger than average secondary school and an exciting place to learn and work. We are proud to be part of The Education Alliance trust and the South Hunsley Partnership (which comprises of eight local primary schools and South Hunsley School) and benefit greatly from collaborating and participating in opportunities for staff and pupils to work together.

At South Hunsley, we value the relationship we have with parents/carers and other stakeholders, fostering strong relationships to ensure our pupils are happy, successful and effectively prepared for their next steps. We expect pupils to take responsibility for themselves and others, creating a culture of mutual respect, kindness and understanding.

We want all pupils to enjoy coming to school and feel a strong sense of community and belonging.

Pastoral care, advice and support is a priority and this is reflected in our pupil support and SEND staffing structure as well as links with external agencies such as Mind.

South Hunsley School has a well-established reputation for providing an inspirational learning experience across the full 11-18 age range and a sustained track record of exceptional pupil performance.

Our curriculum is exciting, constantly evolving and designed to meet the needs of all pupils. Furthermore, it is delivered by expert teachers who commit to

continuous professional development and have access to high quality facilities and resources. We also offer an extensive co-curricular programme consisting of over 50 clubs, many visits (both in the UK and overseas) and a number of other activities including: the Duke of Edinburgh Award at bronze, silver and gold level; an annual school production; performing arts showcases at Hull University; and an incredible range of sporting opportunities, placing us year on year as one of the top state schools in the country for sport.

We encourage all pupils to have high aspirations, to believe in their limitless potential, and to work hard. As a result, South Hunsley is consistently one of the top performing schools in Hull and the East Riding and pupils' outcomes ensure that they are equipped for the destinations of their choice, whether that be university, apprenticeships or employment.

We look forward to welcoming you to our school.

Our Shared Principles

At South Hunsley, we believe in preparing pupils to be enthusiastic lifelong learners who can go forward, prepared for whatever challenges they may face with absolute confidence, knowing they have the necessary skills and personal qualities to succeed and make a positive contribution in the world. We foster a culture of success and recognise achievements at all levels, both from within and outside of school, alongside building strong relationships to ensure all pupils are happy and able to thrive.

Our shared principles are the bedrock of our school. They are:

- **Learning** not only for purpose but for its own sake.
- **Limitless potential** of people, always striving for distinction and high achievement.
- Strong **community**, taking collective responsibility for ourselves and others. Welcoming difference, offering kindness and creating a strong sense of belonging.



Michaela Blackledge
Headteacher



Mitch Trainor
Deputy Headteacher
& Designated
Safeguarding Lead



Barry Gray
Deputy Headteacher



Paul Jacobs
Deputy Safeguarding
Lead & Director of
Sixth Form



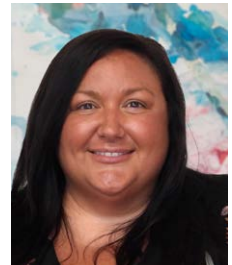
Luke Duerden
Assistant Headteacher



Liz Monkman
Deputy Safeguarding
Lead



Tina Beharrell
Transition Co-ordinator



Hannah Reilly
Director of SEND

Your Pastoral Team



A Head of Year and an Assistant Head of Year oversee each year group and they are the first point of contact for all pupils and parents/carers if there are any questions or concerns.

Each year group attends weekly assemblies and has a chosen charity with pupils and staff being encouraged to organise and participate in fundraising events. More information on the year group charities can be found on the website.

House and Reward System

Our house system allows pupils to develop strong and positive relationships throughout the school community. Each house is made up of two tutor groups from each year group. Pupils take part in various activities across the academic year. Pupils gain stamps in lessons which go towards the house point totals and can be redeemed for rewards in our Rewards Shop.

A rewards system is in place that complements the house system and encourages team motivation and community spirit.

Each week, two 'Year Stars of the Week' are selected, which are pupils who have achieved the most stamps in their year group. Pupils have the option to exchange stamps for rewards in our Rewards Shop.

These can include the following items:

- stationery items
- water bottles
- sports equipment
- front of queue passes
- vouchers from well-known brands such as love2shop, Amazon and Nando's

Hercules

Self-discipline
Courage
Justice

Pegasus

Creativity
Generosity
Compassion

Indus

Curiosity
Honesty
Citizenship

Vela

Resilience
Collaboration
Equity

Draco

Wisdom
Perseverance
Kindness

Orion

Determination
Patience
Humility

The Transition Process

Our shared aim is to see your children happily settled into their new school.

The teaching staff in all of the schools in the South Hunsley Partnership work with parents/carers and children in order to ensure a smooth transition.



We work closely with primary schools that are out of our catchment area who have pupils that will be joining us. For these pupils we understand that the majority of their fellow classmates will be attending a different secondary school and they may feel slightly more nervous about moving to South Hunsley, so we provide all the necessary guidance and support to ensure they also have a smooth transition.

THE SPRING/SUMMER TERM OF YEAR 6

The Year 6 teacher will talk to the children about their move to secondary school and completes a transfer form. This indicates your child's strengths, interests and abilities and is sent to the Transition Co-ordinator at South Hunsley.

During the Spring/Summer term and based upon the information we have about each child, the Transition Co-ordinator organises the children into tutor groups. There will be two Year 7 tutor groups in each house. The tutor groups will be mixed ability groups that usually contain at least one child known to your child from their primary school. On Thursday 26 June, your child will spend one day at South Hunsley, during which they will be introduced to their form tutor, begin to learn their way around the site, go to one or two lessons and meet other children in their class. All parents and carers are invited to visit South Hunsley in the evening. This will allow you to meet your child's form tutor, hear about the curriculum and meet the headteacher.

THE FIRST TERM AT SOUTH HUNSLEY

On their first day, children will be met by their form tutors and year staff. Your child will quickly get to know and be known by their tutor. The frequent meeting of this group ensures that every child gets to know all the other members of the tutor group. There will be an opportunity to begin to make friends. During the first term, there is a tutor evening where you can meet your child's form tutor and discuss how well your child is settling in.



Induction Day 1 for Pupils

THURSDAY 25 JUNE 2026

Pupils should arrive in their Primary School uniform.

Lunch is provided in Riding Canteen.

We will endeavour to follow the timetable adjacent, but this may be subject to change.



ITINERARY

08.40

Pupils should meet on the tennis courts by Humber building which is located by the bus park and car park on Lowfield Lane.

08.40 - 09.10

Assembly in Riding Hall where pupils will be introduced to their tutor group.

09.15 - 10.05

Lesson 1, sample lesson.

10.05 - 10.20

Break - a bottle of water and a piece of fruit will be given. Pupils will be shown where to take their break.

10.20 - 11.20

Lesson 2, sample lesson.

11.20-11.25

Movement to relocate to next class.

11.25 - 12.15

Lesson 3, sample lesson.

12.15 - 13.15

Lunch - pupils will have their lunch. Each tutor group will be shown where to take their lunch.

13.15 - 14.15

Lesson 4, sample lesson.

14.15 - 14.20

Movement to relocate to next class.

14.20 - 15.15

Tutorial is a chance for pupils to start to get to know each other and their form tutor. There will be a variety of activities including a tour of the school with Sixth Form students.

15.15 - 15.20

Pupils escorted to bus park.

Induction Evening for Parents

THURSDAY 25 JUNE 2026

We would like to invite all parents/carers to this evening. Due to the large number of parents/carers involved, there will be two sessions; this will allow for a greater degree of contact between form tutors and parents or carers.

SURNAMES A - J

17.00 - 17.30

Optional short tour

17.30 - 18.15

Meeting in Riding Hall

18.15 - 18.30

Meeting with your child's form tutor in the Ferriby or Sixth Form buildings

SURNAMES K - Z

18.15 - 18.45

Optional short tour

18.45 - 19.30

Meeting in Riding Hall

19.30 - 19.45

Meeting with your child's form tutor in the Ferriby or Sixth Form buildings

MEETING WITH YOUR CHILD'S FORM TUTOR

You will be directed to a room in the Humber building where your child's form tutor will speak to you as a group for around 15 minutes. After this, you will be able to speak to your child's form tutor individually if there are any confidential matters which you wish to discuss. Please note, some form tutors are recent appointments to the school and not yet teaching at South Hunsley, so may not be present on this evening. In this case, you will be met by a pastoral team member.

Hannah Reilly, Director of SEND, will be available if you wish to consult her. Please see separate letter for information.



Induction Day 2 for Pupils

FRIDAY 26 JUNE 2026

Pupils should arrive in the PE kit they would normally wear at Primary School.

Bring a packed lunch and a water bottle.

We will endeavour to follow the timetable adjacent, but this may be subject to change.

ITINERARY

08.40

Pupils should meet on the tennis courts by Humber Building which is located by the bus park and car park on Lowfield Lane.

08.40 - 10.00

As assembly in Riding Hall.
Fingerprints taken for Arbor.

10.00 - 11.45

Pupils will rotate round a variety of sports and performing arts activities.

11.45 - 12.15

Lunch - pupils will eat their packed lunch in The Space.

12.15 - 2.15

Pupils will rotate round a variety of sports and performing arts activities.

2.15 - 3.15

Slide show - photos of Induction Day.

Subject leader to talk to pupils about their subject.

Pupil leaders to talk about Student Leadership Committee.

Questions and Answer session.

15.15 - 15.20

Pupils escorted to bus park.



What You Should Know

08.40 - 09.05	MOVEMENT	09.10 - 10.10	MOVEMENT	10.15 - 11.15	BREAK	11.30 - 12.30	LUNCH	13.15 - 14.15	MOVEMENT	14.20 - 15.20
Registration /Tutor		Period 1		Period 2		Period 3		Period 4		Period 5

ATTENDANCE

At South Hunsley School we encourage pupils to attend school every day and on time. The research shows that pupils that have consistent school attendance not only achieve more but that it's vital for their mental health and emotional growth.

1. Mental Health and Stability:

Regular attendance helps provide a sense of routine and stability, which is essential for mental health. School offers a structured environment where children can develop coping skills, build resilience, and experience a sense of accomplishment.

2. Social and Emotional Development:

Being present at school allows children to form and maintain relationships with their peers and teachers. These interactions are crucial for developing social skills, empathy, and a sense of belonging. Positive social connections can greatly enhance a child's self-esteem and emotional well-being.

3. Academic and Cognitive Growth:

Regular attendance ensures that pupils are engaged with the curriculum, which is important for their cognitive development. Missing school can lead to gaps in learning, which may affect their confidence and performance in the long term.

4. Building Strong Foundations:

School provides opportunities for children to explore their interests, discover their strengths, and set goals. Consistent attendance helps them stay on track with these developmental milestones.

If your child is absent owing to illness, medical appointment or family circumstances, a telephone call on the first day of absence is required by the start of school (8.30am at the latest), or via the Arbor app. It is the parent/carers' responsibility to inform the school on the first day of absence and every subsequent day of absence.

The school operates a 24-hour answer phone **(01482) 631208** or email **absence@southhunsley.org.uk**.

South Hunsley has its own Education Welfare Officer who supports the school in maintaining high levels of attendance.



MEDICAL ISSUES

If your child is taken ill during the day, they should report to their subject teacher or Head of Year. They must **not** use their phone to contact anyone at home.

Some children require medicines to be given during the day. If possible, please give your child the medicine before school or after school. Pupils must not carry medicines, except an inhaler or epipen; all others must be handed in at the main reception with an appropriate form completed by the parent/carer.

STUDENT/PARENT RECEPTION

When you are collecting or dropping off your child for any reason, there is now a dedicated student/parent reception.



The school's work on promoting attendance has had significant impact and trends continue to improve."

Ofsted report, 2024

First Day



WHAT DO THEY NEED ON THEIR FIRST DAY?

A name label in every piece of clothing and bus fare or bus pass. Please provide your child with a strong bag, but it does not need to be huge. A rucksack is much better than one with a single strap.

**Pupils should meet on the tennis courts
 by Humber building on their first day.
 See site map on page 1**

HOW WILL THEY MAKE FRIENDS?

They will know some children from their primary schools, but they will quickly make new friends. The Induction Day in June starts this process, but the form tutors spend time working with their groups so that everyone quickly knows everyone else. The children are taught as a tutor group for most lessons so they quickly build relationships with each other. The many school activities further broaden their circle of friends.

WHO DO THEY SEE IF THEY HAVE A PROBLEM?

If your child loses something or is unsure what to do next, they should ask their form tutor, Head of Year or Assistant Head of Year to help them.



Travelling to School

The safety of our pupils, and of those around them, is our top priority in terms of travelling to and from school. Many of our pupils travel by bus but you may wish your child to cycle, walk or travel in a private car.

BY CAR

If you are transporting your child to school, we encourage parents/carers to drop off and collect pupils further away from the school site to avoid risk of injury and to ease congestion. If this is unavoidable, when accessing the school from the Welton side, please use the Lowfield Lane bus park. When coming in from the Swanland side, please use the D-Ring main entrance. We ask that you do not block the front lay-by or the entrance to the main car park.

The D-Ring at the front of the school may be used for dropping off or quickly collecting pupils, but is often particularly busy at 8.30am and 3.20pm – no cars should be parked in this area. We also ask that you do not park on East Dale Road. The bus lay-by on Lowfield Lane can only be used to drop pupils off in the morning.

Parents/carers should not use the main school car park at the front of the school. These facilities are reserved for staff, visitors and school buses and need to be accessible throughout the school day.

Also, please be courteous to others needing to access the assigned disabled parking spaces.



CYCLING

Cycle sheds are available around the school site and a good cycle lock is essential. We recommend you insure and postcode stamp cycles and that pupils should use official cycle tracks where these are available. We strongly suggest they do not cycle on Great Gutter Lane and, if cycling between Welton footbridge and the school, pupils must make use of the designated path alongside the school sports fields. We strongly recommend that pupils do not use the A63 cycle path as this passes extremely close to the eastbound carriageway. An alternative route to the A63 is available through the village of Welton but cyclists must obey the one-way system to and from school. Pupils must not cycle anywhere on the school site as this represents a danger to pedestrians. Cycling helmets should be worn and lights must be used in winter. The school reserves the right to withdraw a pupil's permission to cycle to school if the cycle is unroadworthy, or behaviour is such that pupil or public safety is put at risk.

BY BUS

If you live three miles or more from school, or if the journey from your home to school is deemed by the Local Authority to be a hazardous route, your child will be issued with a free bus pass. This is normally available before the end of the summer term. Your child will travel from the bus park on Lowfield Lane when leaving school at the end of the day unless travelling on a public bus.

Those pupils who live outside our traditional catchment area can buy a daily ticket. Discounts apply; please contact East Yorkshire BusLine on **(01482) 592929** with regards to eligibility.

There is the 903 bus provided for the following areas, Skidby - Cottingham - Willerby - Kirk Ella - West Ella - Swanland Pond ONLY. To apply for this service find the application form on the website. There is a cost for this service that will be reviewed annually; updates are available online. Please note this service stops at Swanland Pond; however, this service is NOT for you if you think you are entitled to receive a free bus pass through the council. You may be entitled to a free bus pass through the council if you live within catchment area and live more than 3 miles away from the school.

We take the safety of our pupils very seriously. Any complaints about buses, bus behaviour or bus service providers should be made directly to the Local Authority Home to School Co-ordinator via the East Riding of Yorkshire Council website www.buswise.co.uk or by telephoning **0845 644 5949**. Bus timetables are available to view on the school website.

WALKING

We encourage walking to school. Your child can enter the site along Lowfield Lane or via the main entrance on East Dale Road. There is a footpath from a pedestrian bridge across the A63 and along the school fields heading towards Lowfield Lane.

Catering

WHAT HAPPENS AT LUNCHTIMES?

Your child can buy a cooked meal, sandwiches, salad or pasta pots or can bring a packed lunch. Our catering team have an excellent reputation for their freshly cooked and varied meals. All the dining rooms promote healthy eating and hold the Healthy School Status Award. We have a catering section under the 'Parent Information' tab on our school website where you can view our weekly menus.

Please bring a drinks bottle to refill, as we no longer sell bottled water. Hydration stations are located around the school site providing pupils with free, fresh water throughout the day,

HEALTHY EATING

Our aim is to provide all pupils with a varied and balanced diet and we offer pupils a 'Meal Deal' for £2.75 which includes a main meal and a dessert. Our meat and vegetables are locally sourced on a daily basis and pupils are encouraged to offer feedback and menu suggestions.

Breakfast is available from Riding Dining Room from 8.00am until 8.30am, serving cereals, toast, bagels, fruit, warm and cold drinks and much more. At morning break, pupils can purchase a healthy snack including fruit, yoghurts, bread-based products and drinks from The Space, The Cube, The Cube² and Riding. Lunches are available from The Space, The Cube, The Cube² and Riding from 12.25pm until 1.15pm, including vegetarian and gluten free meal options.



BIOMETRIC ID SYSTEM

The school operates a cashless system for school meals; the system is biometric and pupils' fingerprints are registered in preparation for the start of the new term in September. Fingerprints are not stored by the system, and it is not possible to create an image of a finger from the information that is stored in the system.

We are keen to make sure that parents/carers are aware and understand how the biometric ID system works and the benefits such a system can offer. We will register your child's biometric information by scanning an imprint of their finger. Further details of this will be sent in due course. If you do not wish to use the biometric system, there is an option to be issued with a swipe card instead.


Food allergies or intolerances will be asked during enrolment.

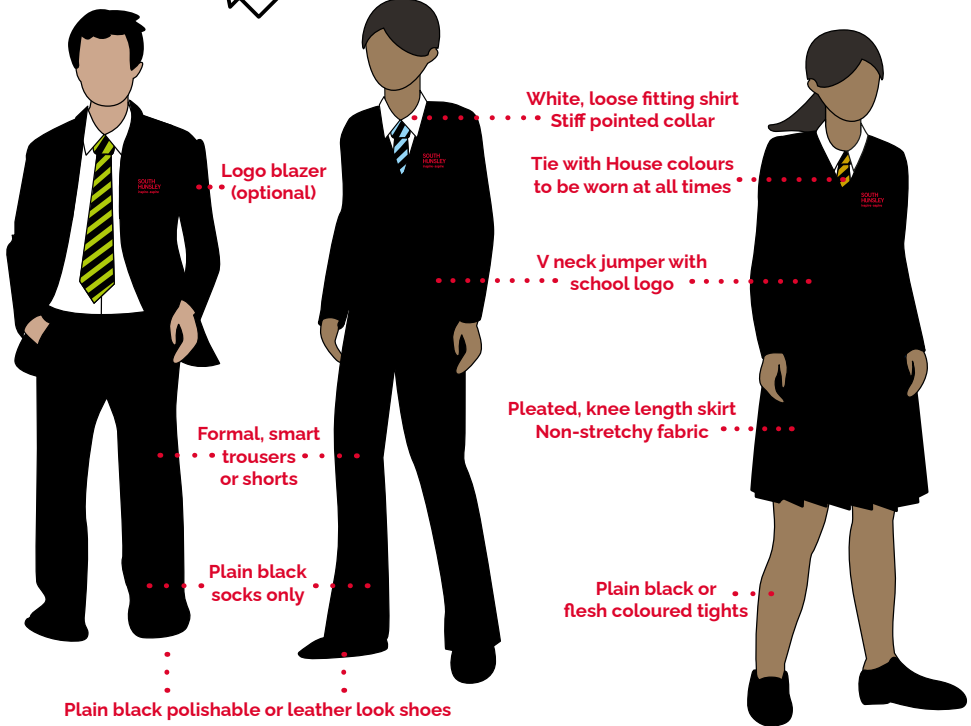
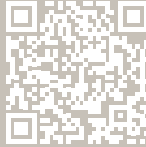
School Uniform Policy

We believe uniform plays a valuable role in contributing to our ethos and culture and helps to set an appropriate tone for education.

It provides a sense of belonging, inclusivity and identity whilst instilling pride and supporting positive behaviour.

For specific information about our school uniform and local stockists please visit our school website or scan the QR code with your phone. We regularly review our uniform and stockists to ensure we keep the costs down for parents/carers.

 southhunsley.org.uk/parent-information/uniform/

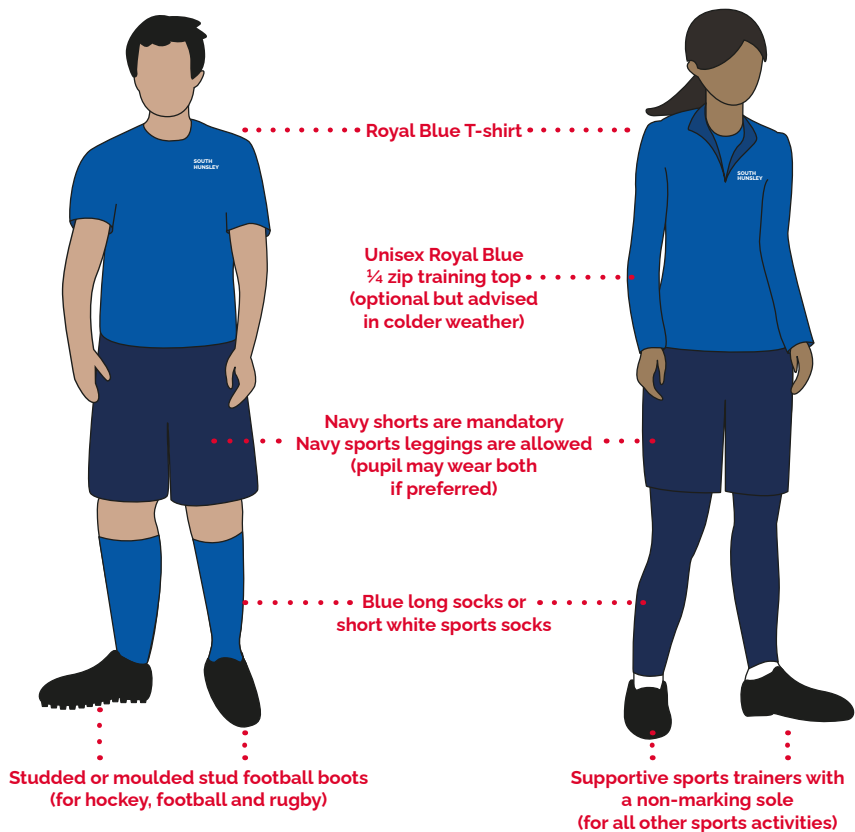


- ✓ Shirts tucked in
- ✓ One watch and one charity wristband
- ✓ Ankle boots can be worn with trousers
- ✓ One pair of small stud earrings

- ✗ Extreme hair colours or styles
- ✗ Trainer socks or socks worn over tights
- ✗ Trousers falling above the ankles
- ✗ Trainers, canvas shoes, sandals or knee boots

Our Uniform Policy could be subject to change at any time.

PE and Sports Uniform



- ✓ Hair to be tied back away from face
- ✓ Shin pads are mandatory for football lessons and extra curricular, and for hockey extra curricular
- ✓ Optional blue base layer under top and shorts are permitted
- ✓ Mouth guards advised for Rugby lessons, mandatory for competition and hockey extra curricular

- ✗ No jewellery of any kind is permitted during physical activity
- ✗ Pupils will not be able to take part in rugby or football on the field in trainers
- ✗ Jogging bottoms and hoodies are not permitted in any form
- ✗ No loose long hair; it must be tied back

If pupils are excused from PE or games lessons, they must provide a note in the planner and still bring their PE kit. For games lessons, we recommend blue leggings or tracksuit bottoms and a training top, jacket or waterproof top and shoes suitable for going onto the sports fields.

All clothing and equipment must be clearly labelled with the pupil's name.

COLD WEATHER

In cold weather there is no objection to pupils wearing a white T-shirt under their shirt but this must not be seen above the shirt and tie. In adverse weather conditions, wellingtons or sturdy footwear can be worn for the journey to school but pupils must change into school shoes on arrival.

OUTER CLOTHING

Denim coats/jackets, hoodies and tops with offensive messages or logos are not acceptable for school and must not be worn. We recommend a relatively inexpensive coat (as opposed to a small 'fashion jacket') which is light coloured for maximum visibility.

MAKE UP AND PIERCINGS

Make up should be subtle if worn. Nail varnish, including false nails, and false eyelashes should not be worn. All piercings other than one pair of small stud earrings are not allowed.

MOBILE PHONES

Mobile phones must be turned off and in pupils' bags on arrival at school and at all times whilst on school site. If pupils need to contact home for any reason, they can go to their Year Office.

EXEMPTIONS

As part of the school's commitment to inclusion, pupils may be exempt from certain aspects of the school uniform policy. Requests should be made in writing to their Head of Year. All requests will be considered on an individual basis.

ORDERING UNIFORM

Uniform can be purchased from our uniform providers:

Rawcliffes

Tel: (01482) 223539

Email: info@rawcliffes.co.uk

Website: www.rawcliffes.co.uk

Address: 16 Saville Street, Hull, HU1 3EF

Steady School Wear

Tel: (01482) 322982

Email: sales@steadyschoolwear.co.uk

Website: www.steadyschoolwear.co.uk

Address: 29 Holderness Road,
Hull, HU8 7NA or 17 Savile
Street, Hull.

EcoUniforms (online)

Website: ecouniforms.co.uk

TIES

A school tie is a compulsory part of South Hunsley's uniform and will reflect which house your child is a part of. Due to pupils not being allocated their house until later in the summer term, ties will be given to pupils on their first day in September. Payment for ties can be made via Arbor. Ties cost **£6.95**, with additional ties available for purchase from the school reception, Rawcliffes or Steady School Wear.

School Sporting Fixtures

SPORTS FIXTURES

The PE department offer a broad range of activities and fixtures throughout the year.

Although there are planned fixtures throughout the academic year, it does tend to change, sometimes at quite short notice, due to the prevailing weather or cup fixtures. An Arbor notification will be sent to parents to inform them of the fixtures and any amendments thereafter. This arrangement allows us to run the maximum number of teams and events with the minimum number of cancellations.

There is a wide range of sporting competitions that we take part in including football, netball, cricket and other seasonal sports. Please enquire when your child starts in September.

PUPIL MEDICAL DETAILS

It is important that PE staff have up-to-date medical information when they are at a fixture. This will be asked during enrolment.

SUPPORTING SCHOOL SPORTS

Please notify us of any temporary injury or illness which may affect the sport concerned. We would also ask that you remind your child of the importance of good behaviour at all times when representing the school.

For sporting updates and news, follow [@SouthHunsleyPE](https://www.instagram.com/SouthHunsleyPE) on Instagram







Extra-Curricular Activities

We are fortunate to be able to offer a wide range of additional activities, often during lunchtimes. Many staff give their time generously in order to enrich our pupils' experience. Below are some examples of the activities available.

To find an up-to-date list of activities, please visit the website.

Music	Activities include orchestra, wind band, jazz group, electronic keyboard workshops and choirs. Each year there are several musical events ranging from workshops to pupil-led concerts.
Whole School Production	Each year we see Drama, Music, Art and Technology pupils combine their talents with astounding results. Recent productions have included School of Rock, The Wizard of Oz, The Sound of Music, Little Shop of Horrors and Nativity, The Musical!
Drama	Drama clubs are available to Years 7, 8 and 9 pupils at lunchtimes. Pupils participate in team building activities and explore script work as well as devising their own performances.
Sport	We offer a vast range of sporting activities and fixtures throughout the year, with many practices open to all pupils for mass participation and enjoyment and some for selected squads for additional specialist coaching.
General Interest	Technology, Mathematics, and History clubs are active within the school. Our EcoHunsley group carry out a range of sustainable projects across the year including allotments and recycling strategies, helping to maintain the schools Green Flag status. A large number of pupils also take part in raising money for a variety of charities.
Student Leadership Committee	Our Student Leadership Committee (SLC) is actively involved in all major projects undertaken by the school, and pupils are given a voice in many of the decisions that affect their experiences whilst at South Hunsley. Pupils also have the opportunity to become Year Captains.
Educational Visits	<p>Examples of domestic and international educational visits and experiences that have previously been offered are:</p> <ul style="list-style-type: none"> ■ Wales and Ribblesdale Residentials ■ Ski Trips ■ WWI Battlefields Tour ■ Cumbria Geography Adventure Visit ■ Football Development Programme ■ Geography Field Work ■ Drama Theatre Visits
Awareness Days and Festivals	Awareness days, weeks and one-off events are supported through our daily school form programme, lessons, as well as whole school staff training and charitable events.

Communication Between Home and School

EMAIL AND LETTERS

We operate an email-only letter service for communication between school and parents/carers. We will also use this system to send alerts and reminders.

Please note, it is the parents/carers' responsibility to ensure we have a valid email address on our system. If you need to update your email address, this can be done by emailing absence@southhunsley.org.uk or by contacting the main office.

ARBOR PARENT AND PUPIL APPLICATION

Arbor is a school management information system which we use to hold key information about your child including their timetable, attendance, contact information and safeguarding updates. Parents/carers will have access to the Arbor Parent Portal which is a simple way to communicate with the school, access the pupil's information, view payment history and more.

SURGERIES

We hold regular surgery sessions for parents/carers to meet with the Headteacher to discuss any aspect of South Hunsley life. Appointments need to be booked in advance. The calendar on the school website includes surgery sessions and you will also receive a letter a couple of weeks before the surgery providing information on how to book an appointment.

SCHOOL WEBSITE

Regularly checking the website will enable you to keep up-to-date with information and developments. School events and activities are recorded on the calendar which can be useful for keeping track of what is happening in school.

THE HUNSLEY WAY NEWSLETTER

This is sent to all parents/carers half-termly and provides updates from around the school and celebrates pupils' achievements.

SOCIAL MEDIA

Follow us on Facebook @SouthHunsley for updates and news stories.



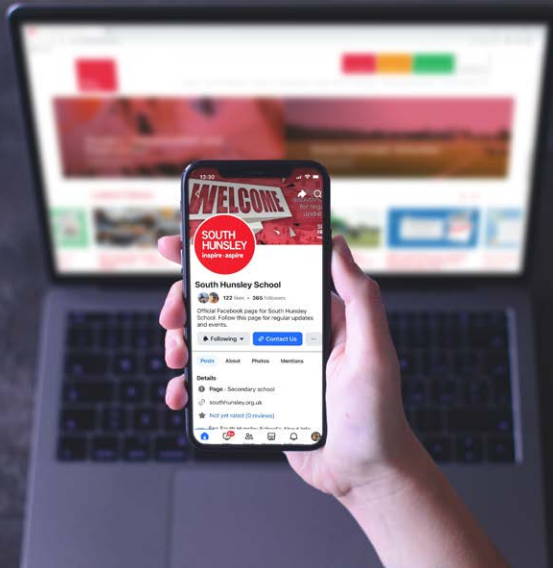
Marketing

South Hunsley School and Sixth Form run a number of events throughout the year including open evenings, awards ceremonies, careers fairs and school productions. We advertise and promote these events on our website and our Facebook page.

We love to celebrate the achievements of our pupils, whether this is during lessons, while attending one of our many extra-curricular activities or even outside of school. Parents and carers are encouraged to share their child's good news by sending an email to marketing@southhunsley.org.uk or sending a post to [@SouthHunsley](https://www.facebook.com/SouthHunsley).

We may ask for your permission to share the positive news with our wider audience through our social media platforms, newsletters or on the website.

At the time of admission, you will have selected marketing preferences on behalf of your child, including sharing their photograph or name online for publicity purposes. These preferences can be changed at any time by emailing marketing@southhunsley.org.uk



South Hunsley Curriculum

South Hunsley School is a part of The Education Alliance, a group of 12 schools based in the East Riding of Yorkshire and Hull. We are also proud partners of Yorkshire Wolds Teacher Training, working together closely to develop the teaching talent of tomorrow.

These partnerships mean that our curriculum, and our teaching team, who design and deliver this curriculum, are working with the latest regional, national and international research and support. This helps to make sure our pupils end up leading happier and more fulfilled lives.

Our school curriculum is designed to be broad, inspiring, engaging and inclusive. Whether your child goes on to be an engineer, a scientist, an artist, a performer, an athlete or any of the other thousands of careers which may not even exist yet, they will leave South Hunsley School equipped with the knowledge and skills they will need.

Following on from our Key Stage 3 curriculum, our pupils in Years 10 and 11 have the opportunity to choose from one of the widest range of option courses available in the region.

We are committed to supporting the government's ambition that pupils study a balance of creative, practical and academic subjects. All of Year 7 pupils will study either French, German or Spanish. They will also have lessons in our specialist facilities for technology, creative arts, information technology and sports.



Learning, not only for purpose but for its own sake



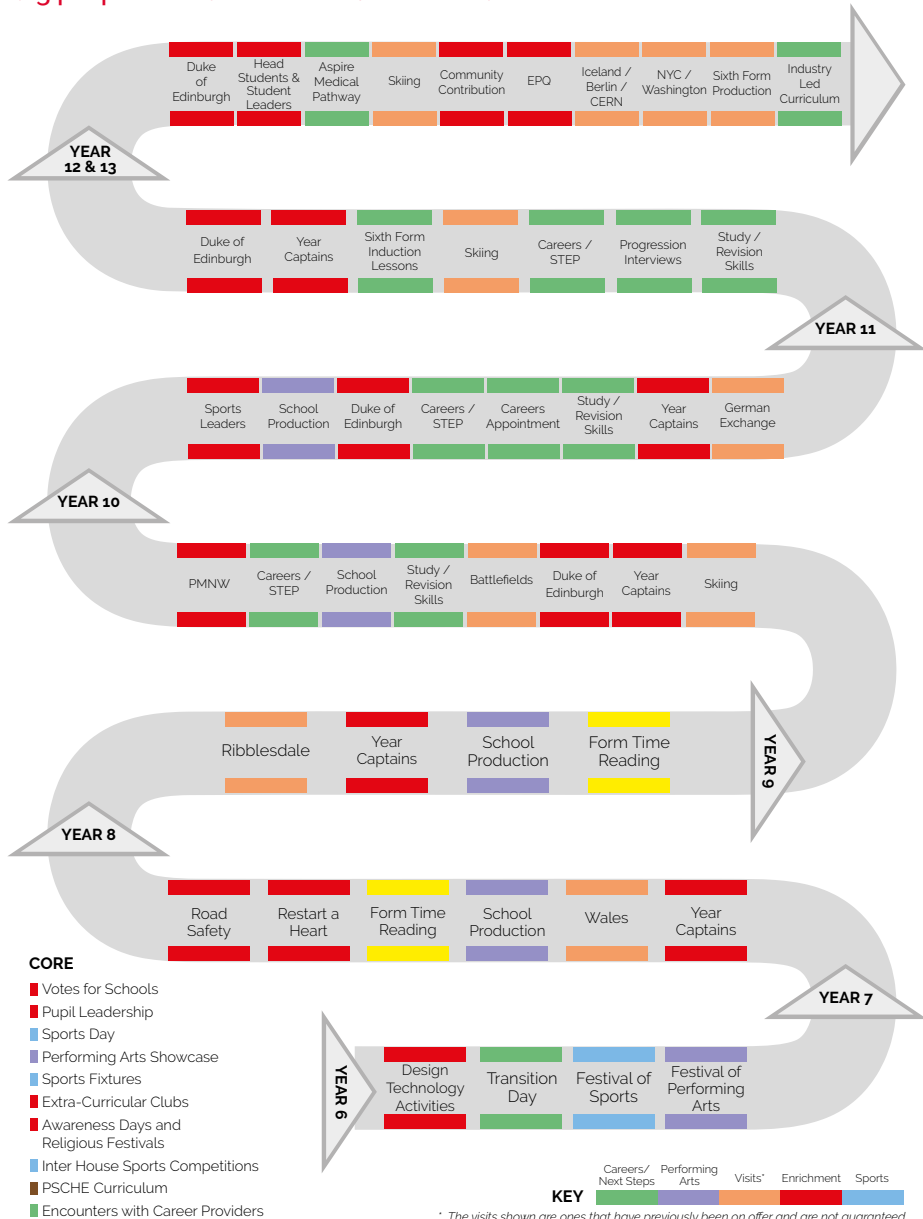
Limitless **potential** of people, always striving for distinction and high achievement



Strong **community**, taking collective responsibility for ourselves and others

Personal Development Map

We are proud of our commitment to offer all of our pupils the support they need to become positive contributors to their communities. Our personal development offer encourages, enables and inspires our pupils to be happy, healthy, safe and confident young people. For further information visit our website.



What Will Your Child Study in Year 7?

Our Year 7 curriculum secures and builds on the prior learning of our new starters, using deliberate sequencing to develop deep knowledge, skills and understanding. It is designed and delivered by subject specialists who promote a love of learning and inspire pupils to want to know more about their subjects than can be taught in school.

Our curriculum encompasses all aspects of the National Curriculum but is designed to provide pupils with a much wider range of rich learning experiences both within and beyond the classroom. We offer a comprehensive personal development programme and a rich co-curricular offer.

Our core subjects are the pillars that support understanding, skills and success. These include English, Maths and Science as well as PE and Modern Foreign Languages.

Our foundation subjects provide pupils with the wider knowledge needed to support our future communities. These subjects are Art, Technology, Geography, History, Religious Studies, Drama, Music and Computing.

The success of a community is measured by the compassionate actions of its members. Our pupils learn about their local and global communities and they learn to understand and appreciate the many influences on modern society.

There are usually 12 tutor groups in Year 7. These are deliberately organised so that each has a mix of pupils from different primary schools and are not based on academic ability. Pupils are taught

in mixed ability groups for most subjects but are taught in ability groups in Maths.

WILL THE WORK BE DIFFERENT?

We make the transition to secondary school as easy as possible by introducing pupils to their new classrooms, staff and routines before they arrive in September. For most pupils it is an exciting time with opportunities to learning about new subjects in a more varied curriculum. The main differences your child will notice are:

- Rather than one main teacher, a larger number of teachers will teach your child, each of whom is a specialist in their subject area
- They will learn in specialist facilities including science labs, technology rooms, art studios and sports facilities
- They move around the site for their different lessons so that they can use the different facilities

Our aim is to offer challenging work to each child with appropriate adaptations in place. We believe that this approach allows all pupils to fulfil their potential and thrive.



Homework

HOW WILL THEY BE HELPED TO ORGANISE THEIR HOMEWORK?

Children frequently worry about homework. We provide each child with a pupil planner so that they can record the tasks they have been set. Teachers also record homework electronically using Microsoft Teams. Pupils will be given access in the autumn term, and training on using the system is offered by the school.

THE EXPECTATIONS FOR HOMEWORK AT KEY STAGE 3 ARE:

Currently, core subjects will set a homework task once a week. The format of these are decided by individual departments, and the setting and deadline days will depend on each pupil's timetable. The work will be marked as per the school marking policy and pupils will be expected to reflect on any feedback and respond if this is deemed appropriate.

Foundation subjects have less timetable allocation than core subjects, and in many cases only one period per week, so the demands on pupil time and the marking allocation for teachers is different to that for core subjects. Foundation subjects will set homework when there is a specific learning purpose or an assessment focus.

It is not always possible or sensible for subjects to set written tasks. This is particularly the case for subjects like PE or Music. Occasionally, however, pupils will be set goals to practice skills or carry out research and teachers will check the completion of these set tasks, as well as use them to assess progress.

We know that many of our pupils use their time after school to pursue all kinds of sports and activities. We encourage all parents/carers and pupils to sit together and plan out a weekly schedule, balancing school work with hobbies and interests. Should you need any help with this, please contact the school.

SEND (Special Educational Needs and Disabilities)

Our aim is to work closely with parents/carers and other agencies to support all children to attend their local school with their friends. Following a period of review and significant investment, South Hunsley has taken significant steps to become even more inclusive.

Where a need is identified, we will support pupils through a graduated response. Typically, the expectation is that subject teachers will be in a position to successfully support pupils with additional needs through adaptive teaching. The SEND team work collaboratively with teachers to support quality first teaching through training and high-quality resources.

If further support is required, a number of interventions can be offered, including:

- Social skills programmes
- ELSA support
- IDL literacy programme
- Speech and Language Therapy intervention
- Reading interventions
- Touch typing
- Lego therapy
- In-class support
- Personal Care programmes





The SEND Team liaises closely with a range of external agencies, such as the Sensory and Physical Teaching Service and Speech and Language Therapy, to ensure all individual needs are appropriately met.

On-site facilities for pupils with a sensory or physical disability include specialist shower and toilets, height adjustable tables, ramps and non-slip surfacing, and access to The Nest. All subjects can also be accommodated on the ground floor to support wheelchair users.

More recently, we have established a Parent/Carer working party which is well attended and has been fundamental in transforming our provision.

If you would like to know more about our SEND provision, please don't hesitate to contact the school.



Mrs Reilly
Director of SEND



Mrs Behlert
SENDCO



Miss Al-Shafee
SENDCO



Mrs Leslie
SEND Team Leader



It's quiet, I can be myself, it's my safe space"
SEND pupil

Safeguarding and Inclusion

SAFEGUARDING TEAM



Mrs Trainor
Designated
Safeguarding Lead,
E-safety
Co-ordinator



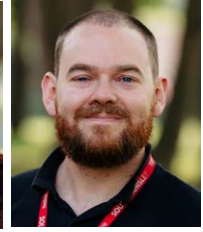
Mrs Monkman
Deputy
Safeguarding Lead



Mr Jacobs
Deputy
Safeguarding
Lead, Director of
Sixth Form



Miss Kouris
Assistant
Safeguarding
Officer



Mr Hathway
Online Safety
Coordinator and
Technical Support

Safeguarding is of the utmost importance at South Hunsley. Each pupil has their Year Team as their main contact for any concerns and the colleagues above are the key leads for Safeguarding and Child Protection within our school.

Inclusion is at the heart of everything that we do. We want all our pupils to have a love for learning; however, we realise that some pupils need this aspect of their school lives nurturing. We want all our pupils to reach their full potential, but we know for some pupils that practical help will be needed.

We also want our pupils to recognise their individual talents and abilities and achieve their goals. The Inclusion Team is comprised of a wide range of specialists who work together with parents/carers to help pupils achieve their best and feel included in all the opportunities on offer at South Hunsley.

The primary focus of the Inclusion Team therefore is to constantly review how

we support our pupils and ask the most important question: what does this pupil or group of pupils need and how can we meet those needs?

We are proud to have achieved the Inclusion Quality Mark award and also attained the higher level of Centre of Excellence: an accolade that fewer than 300 schools across the country hold. We were first awarded in 2019 and have retained the title every year since. The IQM praised our day-to-day inclusive support, particularly during the period of national lockdown. This recognises the truly inclusive nature of South Hunsley School.



What Can You Do to Help Your Child?

Many parents/carers find it challenging to know how to help their child because education and guidance for young people changes frequently and quickly. However, all parents can make an important contribution to their child's schooling. Indeed we believe that only when parents, children and teachers work together can children reach their full potential.

You can:

- Set aside time to discuss the move from primary to secondary school with your child. They may have mixed feelings – keen to move to the next stage of their education but apprehensive about the change. Common worries for many children are lunchtime arrangements and travelling to and from school. Some pupils will miss their primary school and the comfort they took from knowing everyone and how everything was organised. However, experience shows pupils quickly settle and adopt to the new routines.
- Make sure pupils are properly equipped for school each day by checking their timetable on the previous evening.
- Check homework planners every night with your child and sign them each week.
- Encourage children by being positive about their achievements.
- Avoid term-time holidays.
- Try to attend Progress Evenings.
- Discuss the content of this booklet.
- Label every item of clothing and equipment, wallets, etc.
- Ensure they pack their bag with any additional kit or equipment the night before.
- Go through their timetable with them.
- Make sure there is credit on their cashless catering account for their lunch if appropriate.
- Try to ensure your child attends the Induction Days on **Thursday 25 and Friday 26 June 2026** so they can meet their form group and tutor, and make sure you can attend the parents' evening on the same night.



Eric Fell Learning Resource Centre

The Eric Fell Learning Resource Centre (EFLRC) is our school library and is situated in Humber building and provides a welcoming environment both for study and recreational use.

RESOURCES AVAILABLE

We have approximately 11,000 fiction, non-fiction and reference books available for pupils to access, including 'shelf help', wellbeing section, equality and diversity, dyslexia friendly literature and also a Sixth Form Fiction section. Other facilities and materials available include: newspapers, magazines, DVDs, audio books, laptops, photocopier and printer usage.

STATIONERY SHOP

The EFLRC offers a stationery shop where pupils can purchase any supplies they may need throughout the school day by using the Biometric system. Examples of items sold include: pens, pencils, pencil cases, art books, scientific calculators, compasses, protractors, rubbers, rulers and colouring pencils.

Opening Hours

The EFLRC provides a supervised study space for all pupils during the following hours subject to change:


Monday	8.30am - 5.00pm
Tuesday	8.50am - 5.00pm
Wednesday	8.30am - 5.00pm
Thursday	8.50am - 5.00pm
Friday	8.30am - 4.30pm

Please note the Library is closed between 1.00pm - 1.15pm for lunch.



Recognition

Pupils' achievement, effort and behaviour will be recognised, rewarded and celebrated in the following ways:

 [southhunsley.org.uk/
house-information/
rewards](https://southhunsley.org.uk/house-information/rewards)



Stamps

Pupils regularly receive stamps which they save up and spend in the school Reward Shop. The awarding of stamps is in the pupil planner. Stamps are awarded both within and outside the classroom and awarded by all staff. The stamp leads to recognition through our system of certificates and praise phone calls. Stamps are spent on things like stationery or can be saved up for more expensive prizes e.g. Amazon vouchers or gaming vouchers.

Praise and Encouragement

Adults always look to give praise and encouragement where pupils demonstrate the Hunsley Way expectations.

Golden Tickets

Pupils can be nominated by their teachers using a Golden Ticket for showing respectful and courteous behaviour. Nominees will then be entered into a prize raffle draw.

Certificates

There are four levels of certificates which are awarded in assemblies or on other appropriate occasions.

Form Tutor Certificate:
500 stamps

Head of Year Certificate:
1,000 stamps

Senior Leader Certificate:
1,500 stamps

Headteacher Certificate:
2,000 stamps

Praise Phone Calls Home

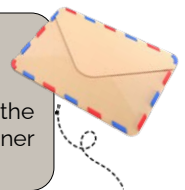
At key times throughout the year, senior leaders, pastoral staff, classroom teachers and tutors phone the parents/carers of the pupils who have the most stamps or who have been recognised for doing something exceptional.

Attendance Draws

Pupils who achieve 100% attendance for a particular week are entered into a raffle draw in assembly the following week with the chance of winning a prize. There is also an attendance draw at the end of each term for all pupils with 100% attendance for that term.

Letters Home

Letters are sent home for exceptional work, positive contributions or for consistently doing the right thing e.g. no written warnings in their planner over a sustained number of weeks.



End of Year Rewards Activity

Pupils who show a consistently good attitude to learning throughout the year are eligible for our end of year rewards events and visits.

Celebration Assemblies

Leaders come into assemblies to celebrate the efforts, improvements and achievements of pupils. Prizes will be awarded in assembly.

Postcards Home

Postcards are sent home for sustained hard work over a number of lessons, a fantastic piece of work, great or improved attendance or for a significant contribution to our community.

The Hunsley Way

CLASSROOM ETIQUETTE

- Arrive on time, in full uniform, with the correct equipment.
- Follow instructions.
- Show respect to staff, students, and our school community.
- Listen carefully when others are speaking.
- Stay focused and allow everyone to learn without disruption.
- Use good manners at all times.
- Take care of our school environment and resources.
- Complete and hand in homework on time.
- Remain seated and wait to be dismissed at the end of the lesson.

SOCIAL TIME ETIQUETTE

- We act responsibly around the school site and take pride in keeping it clean and tidy.
- We listen to and follow instructions given by staff.
- We share school facilities and equipment, such as benches, fairly with others.
- We stay in the correct, designated areas during social time.
- We respect personal space and keep our hands to ourselves.
- We play ball games only on the 3G pitch.
- We always queue sensibly and are respectful to others.



Behaviour for Learning

Here at South Hunsley we pride ourselves in building strong positive relationships with our pupils, and this is underpinned by our Behaviour for Learning policy. Pupils can thrive in a calm learning environment, where teachers can teach, and pupils can learn. We educate our pupils to be responsible, mature and kind citizens fully prepared to contribute to society and flourish.


Ofsted recognise the positive behaviour in South Hunsley School and state "pupils behave well in lessons and self-regulate their behaviour around site".

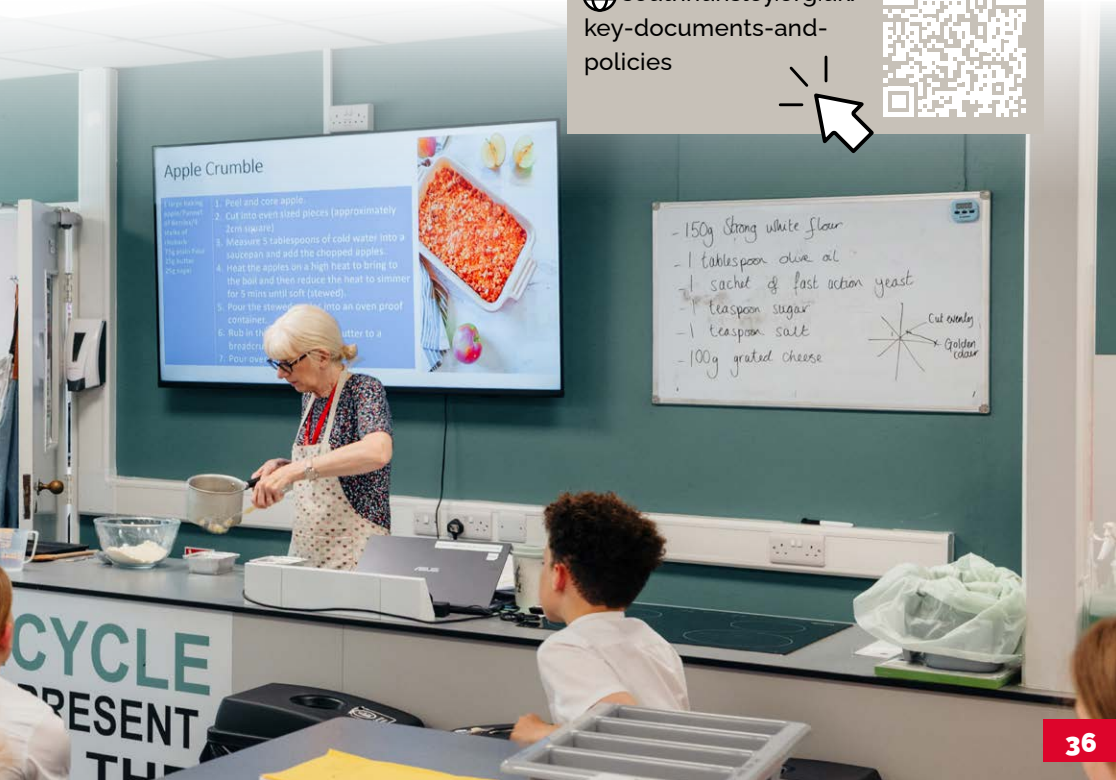
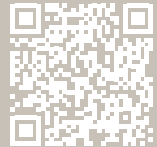
Our Behaviour for Learning policy focuses upon our key principles:

- The emphasis should be largely in favour of rewarding pupil success and positive behaviours to allow a positive ethos to prevail.

- Encouraging pupils to take personal responsibility for their behaviour choices and to understand how this impacts their learning and that of others.
- Expected behaviour needs to be explicitly taught and modelled to pupils and reinforced consistently.

For more information, please see our school website or scan the QR code to access our Behaviour for Learning Policy.

 [southhunsley.org.uk/
key-documents-and-
policies](https://southhunsley.org.uk/key-documents-and-policies)



Term Time Holidays

There is no provision in law for Headteachers to authorise an absence for the purpose of a term time holiday other than in a very limited set of exceptional circumstances outlined below.

Attendance at school is very important for your child's future as there is a clear link between attendance, attainment and more importantly mental health and wellbeing.

Even a few days' absence can impact on a child's progress and drop them out of the top band for attendance.

REQUESTS

If you want to request a leave of absence, you must complete a holiday form which are available on the school website and from reception. Your request for your child's absence from school must fall into one of the following categories to be authorised. Without evidence, the Headteacher will not authorise your request.

- Service personnel returning from a tour of duty abroad where it is evidenced the individual will not be in receipt of any leave in the near future that coincides with the school holidays.
- Where an absence from school is recommended by a health professional as part of a parent or child's rehabilitation from a medical or emotional issue.
- The death or terminal illness of a person close to the family.
- To attend a wedding or funeral of a person close to the family.

If a request meets these exceptional circumstances as detailed above, but falls within the following times, the Headteacher must be convinced that absence from school is the only option:

- The first half term of any academic year (applies to all pupils).
- Year 9 options time (for pupils in Year 9).
- At any time during Years 10 and 11 (for all pupils in these year groups).
- Where a pupils' attendance is classified as a persistent absence.

South Hunsley Home School Agreement

We believe that children learn most effectively in a secure, happy environment, where both home and school work together to support the child during their education from 11-18 years. To strengthen the sense of partnership which already exists, we offer a partnership agreement to the parents of our new pupils.

- Support the school's Code of Conduct, including our Mobile Phone Agreement and good behaviour at all times
- Encourage a range of out of school interests
- Communicate with school if there is any matter of concern where we could benefit from information regarding home circumstances e.g. change of address

- Inform us when you know that your child will be absent, for example, medical visits
- Treat all employees of the school with dignity and respect
- Take family holidays during the school holidays
- Phone the school if your child is absent and provide a letter on the day of return after an absence

It is important in a rapidly changing world that children have a sense of security. This agreement is an attempt to add to that sense of security.

For your child to succeed, we need your support and agreement.



What Next?

PRIOR TO STARTING SCHOOL:

- Complete enrolment
- Apply for school bus pass (if applicable)
- Prepare your child for Induction Days
- Check your time slot for Induction Evening and attend
- Double check how they are travelling to school and have a trial run if possible

UNIFORM/SPORTS KIT:

- Jumper with school logo
- Blazer with school logo (optional)
- White loose fitting shirts with stiff pointed collar
- White T-shirt base layer (optional)
- House ties will be issued on their first day
- Pleated, knee length skirt (non-stretchy fabric) and/or formal, smart trousers which meet socks or shorts
- Plain black socks/tights or flesh coloured tights
- Plain black polishable or leather look shoes
- Royal blue T-shirt (PE/Games)
- Royal blue ½ zip training top (optional)
- Navy shorts
- Navy leggings (optional)
- Blue long socks or short white sports socks

- PE base layer (optional)
- Studded or moulded stud football boots for hockey, football and rugby
- Supportive sports trainers with a non-marking sole (for all other sports activities)
- Ensure their uniform is labelled with their name

EQUIPMENT:

- Pens
- Pencil and rubber
- Sharpener
- Ruler and protractor
- Pair of compasses
- Scientific calculator
- Pencil case
- Water bottle
- Glue stick (optional)
- Colour pencils (optional)
- Highlighter pen (optional)

FIRST DAY OF TERM:

- Ensure they are wearing correct uniform and carrying a water bottle
- Make sure their bag is packed with the correct equipment
- Make sure they are at school by 8.30am at the latest at the tennis courts

The South Hunsley Partnership

The transfer arrangements outlined on the previous pages help children to adjust socially, but as a group of schools we are committed to a successful transfer in an academic sense. The South Hunsley Partnership consists of eight primary schools, South Hunsley School and Sixth Form. We work together very closely in order to provide continuity of learning from the age of 5 to 18. There are a number of ways we link our teaching and learning.



- Regularly visit South Hunsley to experience practical lessons, for example Design and Technology.
- A transfer document is completed for each child. This provides academic and social information.
- Core subjects teachers may visit to deliver a lesson within the primary setting.
- Sporting activities organised throughout the year at South Hunsley with various ages in competitive events.
- Seasonal concerts are arranged and performed at South Hunsley.
- The Headteachers of the 'South Hunsley Partnership' meet regularly to discuss the curriculum and share ideas.
- Year 6 teachers regularly meet with the Transition Coordinator and SEND department.
- Year 6 students invited to be in the audience of some of South Hunsley's Creative Arts performances involving their current pupils.

South Hunsley Sixth Form

Although it may seem a long way off, choosing where to study after your GCSEs is a big decision that is years in the making. The choices that your child makes in their early secondary school years can mould their future from Key Stage 4, post-16 options and beyond.

At South Hunsley, we'll do everything we can to help our students achieve their ambitions, particularly if they are looking to stay on to join our Sixth Form.

We can offer a valuable and enjoyable Sixth Form experience with a variety of subjects, outstanding teaching, great facilities, plenty of work opportunities and lots of enrichment and social activities. Students will also benefit from learning in a familiar environment with teaching staff who have been there for every step of their journey.

South Hunsley Sixth Form also offers a wide range of both UK and overseas trips for students. Trips to New York, Germany and Iceland are all included in the Sixth Form calendar, plus there are plenty of theatre trips, art exhibitions and university visits to take part in. These often link to their studies, but also allow them to broaden their horizons and share new experiences with friends.

INDUSTRY-LED CURRICULUM

We had launched a new curriculum to help bridge the gap between education and employment. This will ensure that our students not only leave us with an excellent set of exam results, but also the highest level of employability and technical skill to compete nationally and globally.

Students in Year 12 will be able to engage in a number of industry-led enrichment opportunities, which aim to put employability skills development at the heart of the curriculum. This means students not only leave us with excellent academic qualifications but also the skills and qualities needed to succeed as a university graduate or higher-level apprentice in the future.



95%

of students were successful in being placed at their **1st choice** university with a **high percentage** accessing Russell Group universities

92%

of Year 13
leavers go on to
Exceptional
destinations
from University
to Degree
Apprenticeships



Scan me for
the prospectus



*The support and encouragement I received
at South Hunsley made learning enjoyable
and helped me reach my potential.*

*The extra guidance from my teachers gave
me confidence for the next step in my
education at university."*



**Mary, South Hunsley School
alumna 2025**

SOUTH HUNSLEY

inspire · aspire

South Hunsley School
and Sixth Form

East Dale Road
Melton
North Ferriby
HU14 3HS

01482 631208
www.southhunsley.org.uk
  @southhunsley