

**SOUTH
HUNSLEY**
inspire · aspire

PERSONAL DEVELOPMENT

AT SOUTH HUNSLEY
SCHOOL AND SIXTH FORM



AIMS

We are proud of our commitment to offer all of our pupils the support they need to become positive contributors to their communities.

Our personal development offer **encourages**, **enables** and **inspires** our pupils to be happy, healthy, safe and confident young people.

Through their engagement with our personal development programme, our pupils will contribute to the world we live in now and in the future as employable, active and responsible citizens.



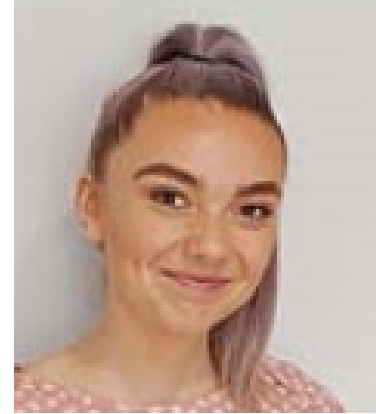
MEET THE TEAM



Miss Bower
*Assistant Headteacher overview of
Personal Development*



Miss Mooney
CP and RS Subject Leader



Miss Kenyon
CP Subject Leader



Mrs Proudlove
Lead for KS5 CP



Miss Ollet
RS Subject Leader



Mrs Parsley
Careers Coordinator



Mrs Bidder
Student Leadership Coordinator



Mr Duerden
*Assistant Headteacher
Educational Visits Coordinator*



PD CORE ENTITLEMENT

Our core entitlement and enrichment opportunities are designed to take students outside of their comfort zone, open their eyes to their limitless potential as they show **determination, resilience** and **courage** to develop an appreciation of their role within the local, national and global community.

Core Entitlement

Our core entitlement embodies what it means to be part of South Hunsley School and Sixth Form. Through these experiences pupils develop confidence, leadership and a sense of community. Every pupil is entitled to these opportunities and as a school we have made a commitment to encouraging full participation in our core entitlement.

Enrichment Opportunities

Our enrichment opportunities offer pupils the option to develop their passions and talents for the creative and performing arts, sports and other subjects through extra-curricular activity or further study, whilst our pupil community groups drive positive change. Our rich and diverse extra-curricular timetable can be found here.

KS3

- > Ribblesdale Residential
- > Votes for Schools

KS4

- > Sports Leaders
- > Votes for Schools

KS5

- > Industry Led Curriculum
- > Community Contribution

HOUSE VALUES



Determination
Focussing your energy on finishing a task, especially when it's difficult

Patience
The ability to wait and to tolerate difficulties you face as you try to achieve your goals

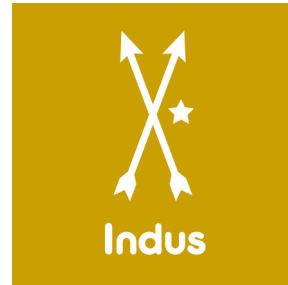
Humility
Not boasting and being aware of how much you owe to others for your success



Wisdom
Making the right choices at the right time

Perseverance
Not giving up when facing difficulties

Kindness
Being friendly, generous, and considerate



Curiosity
Being eager to know or to learn something new

Honesty
Telling the truth and being sincere

Citizenship
Your involvement in your community and society



Creativity
Being able to create and to use the imagination

Generosity
To give something for someone else's benefit

Compassion
Showing care and concern for others



Resilience
Being able to recover quickly from struggles and setbacks

Collaboration
Working together for a common purpose to achieve a goal

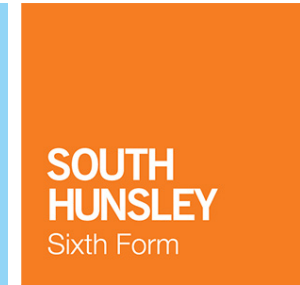
Equity
Treating others equally



Self-discipline
The ability to control yourself and be very organised

Courage
Acting with bravery in fearful situations

Justice
Acting with fairness towards others by honouring rights and responsibilities



Critical Thinking
The ability to analyse and question information, making logical and well-thought-out judgments

Resourcefulness
The ability to find and use different ways to help achieve your goals

Service
The act of doing work that benefits other people

PSCHE CURRICULUM

Community and Personal Studies (PSCHE) is at the heart of our school's values and is embedded into all aspects of the curriculum, as well as being its own discrete subject. Our PSCHE curriculum enables our students to become healthy, safe, independent and responsible members of our communities. We deliver a curriculum that teaches students to become well-rounded individuals with a deep understanding of the world around them.

Students learn self-awareness, teamwork and how to form and maintain positive relationships. We promote self-worth by encouraging everyone to contribute to school life and the wider community. Our learners have knowledge and understanding of the fundamental British values of democracy, individual liberty, the rule of law and mutual respect and tolerance. We stimulate, challenge and nurture children's spiritual, moral, social and cultural curiosity.

 Curriculum Lesson Overview

 PSCHE Intent 2023

 PSCHE Curriculum Map

 TEAL PSCHE Curriculum Map



FORM TIME, ASSEMBLIES AND AWARENESS DAYS

FORM TIME

	YEAR 7	YEAR 8	YEAR 9	YEAR 10	YEAR 11
MONDAY	Assembly	Routines	Routines	Routines	Routines
TUESDAY	Routines	Assembly	Careers / Study Skills	PD / Careers	CP
WEDNESDAY	Reading	Reading	Assembly	CP	Careers / Study Skills
THURSDAY	Votesforschools	Votesforschools	CP	Assembly	Votesforschools
FRIDAY	Reading	Reading	Votesforschools	Votesforschools	Assembly

ASSEMBLIES

Throughout the school year, assemblies will be carried out once a week per year group and will cover a wide range of topics.

AWARENESS DAYS

Awareness days, weeks and one-off events are supported through our daily school form programme, lessons, as well as whole school staff training and charitable events.



RSE

(Relationships and Sex Education)

Today's children and young people are growing up in an increasingly complex world and living their lives seamlessly on and offline. This presents many positive and exciting opportunities, but also challenges and risks.

In this environment, children and young people need to know how to be **safe and healthy**, and how to manage their academic, personal and social lives in a positive way.

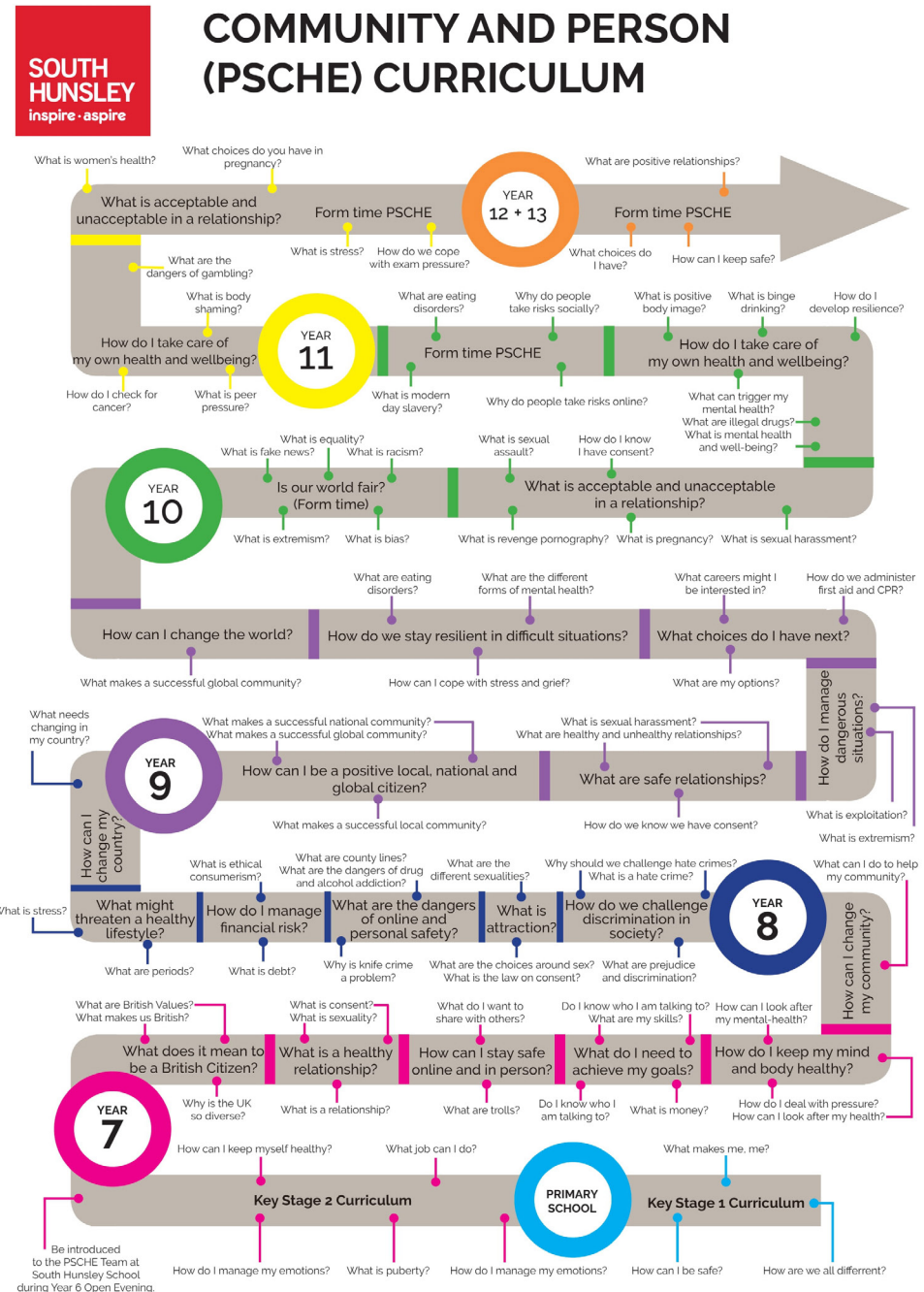
At secondary, teaching will build on the knowledge acquired at primary and develop further pupils' understanding of health, with an increased focus on risk areas such as drugs and alcohol, as well as introducing knowledge about intimate relationships and sex.



Relationships and Sex Education Policy
(Autumn 2023)



RSE Curriculum



RS AND SMSC DEVELOPMENT

(Religious Studies and Spiritual, Moral, Social and Cultural Development)

RS enables learners to reflect upon and deepen their understanding of human culture, beliefs and thought. It is a quest for understanding the self and the nature of what it means to be human. It is important to understand the role religion plays in everyday life, whether we believe in a higher power or not, religion influences many aspects of our daily life.

Through SMSC lessons, the school aim to promote the spiritual, moral, social and cultural development of our pupils as well as actively promoting fundamental British values.

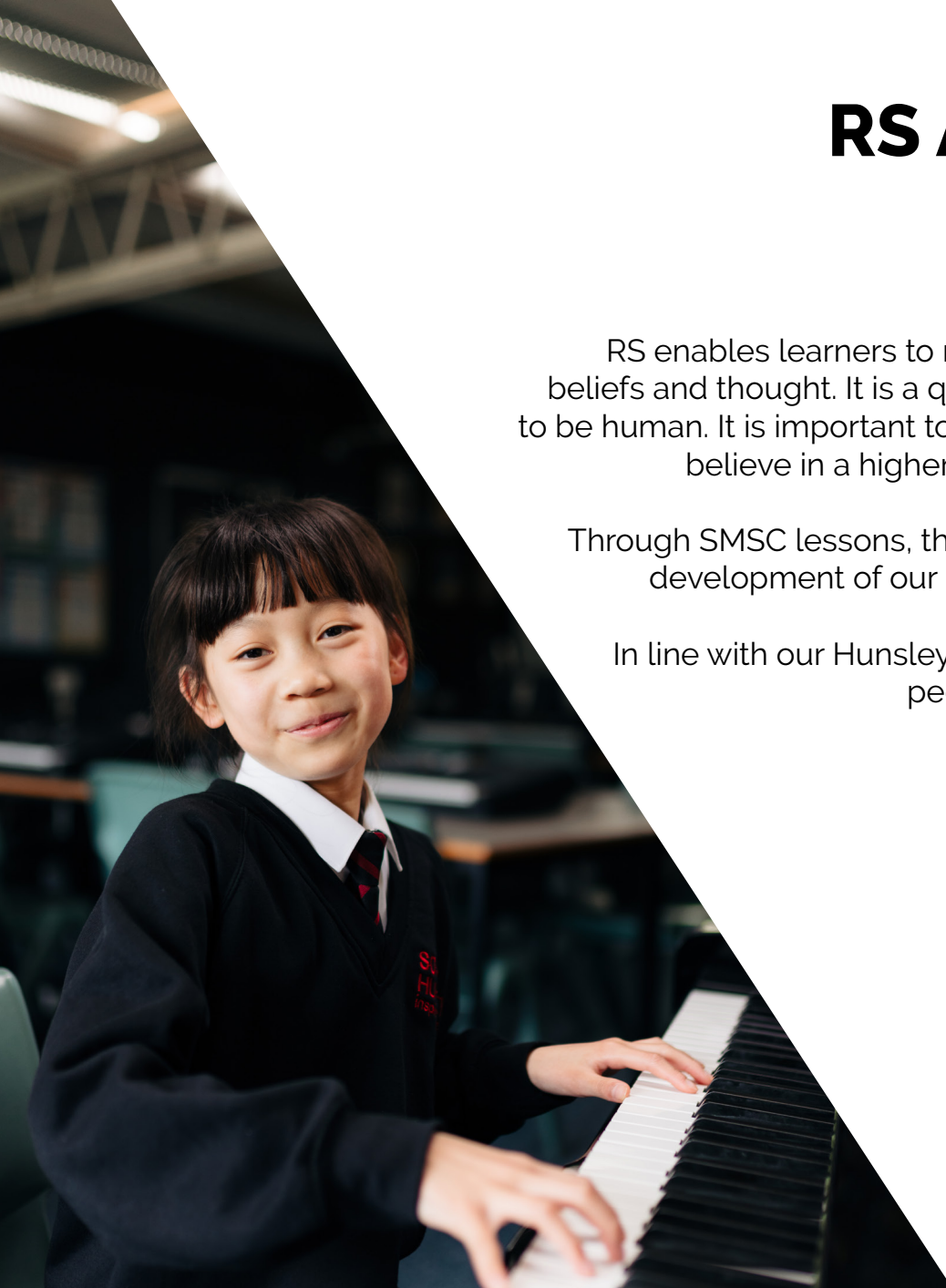
In line with our Hunsley Way Expectations, we strongly encourage our pupils to regard people of all faiths, races and cultures with respect and tolerance.



Religious Studies Curriculum Map



Assembly Rota 2023



CAREERS

Young people are faced with a complex set of demands when preparing for their future careers. South Hunsley aims to ensure that students are **self-confident, skilled** and **career-ready**. This is achieved through a comprehensive programme of activities to help them choose pathways that are right for them and to be able to manage their careers and sustain employability throughout their lives. Our programme starts in Year 7 through Year 13, and is based on the nationally recognised Gatsby Benchmarks.

The programme follows the eight Gatsby Benchmarks of Good Career Guidance which are:

- >> A stable careers programme
- >> Learning from career and labour market information
 - >> Addressing the needs of each pupil
 - >> Linking curriculum learning to careers
- >> Encounters with employers and employees
 - >> Experiences of workplaces
- >> Encounters with further/higher education
 - >> Personal guidance



South Hunsley Careers



SOUTH HUNSLEY STUDENT UNION



Aims

- To provide a forum for students to discuss their views and opinions.
- To serve as a spokesperson for the concerns of year groups and individuals.
- To stimulate student interest in school activities and promote whole school and house values.
- To provide opportunities for discussion, information and consultation about matters of concern to the student body.

Student Year Leaders (Sixth Form)	>>	Year Captains per Year Group (Lower School)
--------------------------------------	----	---

Roles and Responsibilities

Student Leadership Team

- Student representatives of the student body.
- Lead the Student Union and liaise with staff overseeing the Student Union.
- Ambassadors for the school at Open Evenings etc.
- Participate in fundraising events.
- Mentoring students.
- Meet with the Senior Leadership Team and staff about matters concerning the student body.

Student Year Leaders

- Student representatives of the year group and a committee / group.
- Support Heads of Year by visiting the year group office and forms throughout the week.
- Support tutors and mentor students.
- Support the Student Leadership Team in communicating notices and reviewing feedback from year surveys.
- Meet with Year Captains and report regularly to the Student Leadership Team.
- Ambassadors for the school at Open Evenings etc.
- Participate in fundraising events.

Year Captains

- Lower school student representatives of the year group.
- Support tutor groups.
- Support the Student Union in communicating notices and reviewing feedback from year surveys.
- Ambassadors for the school at Open Evenings etc.
- Participate in fundraising events.

VOTESFORSCHOOLS

Parent and Carer Information

VotesforSchools is a weekly current affairs-based voting platform designed to engage young people in political and social issues. Through weekly discussion and voting, not only are voters learning about the world around them, but they are also becoming active citizens and preparing for participating in their democratic processes as adults. Below are some great ways for you to get involved in the conversation!

1. Check out their website: At 4PM every Friday, the latest VoteTopic goes live. Go to www.votesforschools.com to see what voters will be debating in the coming school week.
2. Discuss the topic at home: Ask your child to give arguments for each side of the debate to encourage critical thinking – the weekly Home Information Sheet can help you with this. If you're not sure where to find it, please ask a member of staff to share it with you. Why not ask your child how they voted and why?
3. Discuss the results.
4. Brush up on your knowledge: read up on any topics your child is discussing or have discussed to see what your take on it is. For more sensitive topics, they also provide a list of useful resources and organisations where you or your child can find out more or seek support.
5. Share your ideas: Talk to your child about which issues they would like to see discussed at VotesforSchools.

ECO HUNSLEY

Pupils of all ages have the opportunity to join the Eco Hunsley committee, which is dedicated to creating sustainable initiatives for the school to reduce our carbon footprint. Projects include tree planting around the site, building bird boxes for local wildlife and running a second hand prom dress scheme.

We have also been awarded the Green Flag Award from the Eco-Schools programme, which is the largest educational programme on the planet.

CHANGE MAKERS

South Hunsley is committed to promoting equality, diversity and inclusion throughout its practice and creating a safe inclusive environment for all pupils and colleagues.

The Change Makers are a collaborative working group made up of pupils across all year groups who work together to create a diverse and equal community within the school.



VISITS

Our pupils enjoy a range of local, national and international experiences, including exchanges, sport and ski visits.

One of our most popular overseas visits is offered by our History department. The First World War Battlefields visit to France and Belgium is memorable for our Year 9 pupils, providing them with the chance to experience first-hand the landscape and atmosphere they've discussed in the classroom.

Pupils can take part in sports tours in the UK and abroad. These tours enable pupils to compete in tournaments and build on team work skills in some of the most recognised venues in the world. In addition, pupils have the chance to participate in residential visit to experience outdoor pursuits both in Wales and Ribblesdale. There are international skiing visits offered to students in every key stage.

We offer pupils a wide range of cultural experiences, exploring the arts, museums and theatres. Pupils are able to develop an understanding of British values and those of other cultures.

Students in the Sixth Form also benefit from a number of fantastic opportunities both in the UK and abroad to broaden their horizons.

Since 2018 we have also been proud to offer pupils in Year 9 and above the chance to complete the Duke of Edinburgh's Award.



SOUTH HUNSLEY

inspire · aspire

East Dale Road
Melton, North Ferriby
East Yorkshire
HU14 3HS

@SouthHunsley
www.southhunsley.org.uk
enquiries@southhunsley.org.uk
01482 631208

