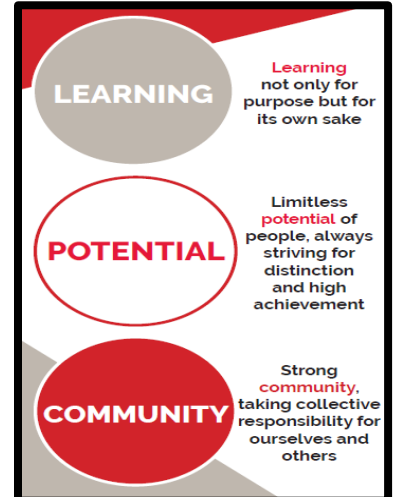


Welcome to the Social Science Curriculum

Our Social Science Department curriculum is designed to equip our students with the appropriate knowledge, understanding and skills needed to be able engage, understand and explain the causes of human and society’s behaviour and experience. We challenge each student academically through the breadth of the curriculum.

We continually encourage students to look at the world in a deeper and critical way allowing them to question why society functions in the ways it does and how it impacts on the individual and their place within society. The curriculum will also allow our students to take ownership of their learning and behaviour as they understand how and why they behave in relation to social situations and our communities. Through developing this wider knowledge base it allows students to grow into a positive productive students and members of society.



Social Science at South Hunsley School

Within each of our Social Science subjects students are challenged to work collaboratively and think independently. As a result, students develop the ability to think analytically and reach logical and informative conclusions. The knowledge and skills developed by our students are designed to transferable within the programme of A Level learning, in their development as an independent reflective learner and moving into further study and employment.

Due to the challenge of studying a Social Science subject students will build personal resilience, as well as, develop empathy, compassion and a much deeper understanding of the human condition. This will enable them to challenge stereotypical and discrimination that occurs within themselves, their own personal community and greater society.