



**SOUTH
HUNSLEY**
inspire · aspire

PERSONAL DEVELOPMENT

AT SOUTH HUNSLEY
SCHOOL AND SIXTH FORM

AIMS

We are proud of our commitment to offer all of our pupils the support they need to become positive contributors to their communities.

Our personal development offer **encourages**, **enables** and **inspires** our pupils to be happy, healthy, safe and confident young people.

Through their engagement with our personal development programme, our pupils will contribute to the world we live in now and in the future as employable, active and responsible citizens.



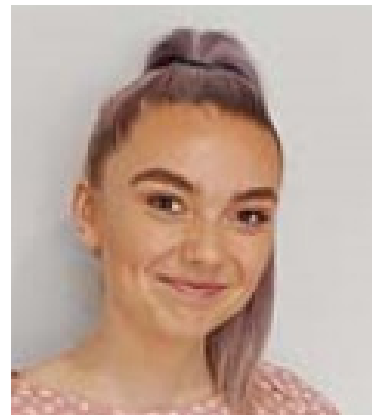
MEET THE TEAM



Miss Bower
*Assistant Headteacher overview of
Personal Development*



Miss Mooney
CP and RS Subject Leader



Miss Kenyon
CP Subject Leader



Mrs Proudlove
Lead for KS5 CP



Miss Ollet
RS Subject Leader



Mrs Parsley
Careers Coordinator



Mrs Bidder
Pupil Leadership Coordinator



Mr Duerden
*Assistant Headteacher
Educational Visits Coordinator*



PD CORE ENTITLEMENT

Our core entitlement and enrichment opportunities are designed to take pupils outside of their comfort zone, open their eyes to their limitless potential as they show **determination, resilience** and **courage** to develop an appreciation of their role within the local, national and global community.

Core Entitlement

Our core entitlement embodies what it means to be part of South Hunsley School and Sixth Form. Through these experiences pupils develop confidence, leadership and a sense of community. Every pupil is entitled to these opportunities and as a school we have made a commitment to encouraging full participation in our core entitlement.

Enrichment Opportunities

Our enrichment opportunities offer pupils the option to develop their passions and talents for the creative and performing arts, sports and other subjects through extra-curricular activity or further study, whilst our pupil community groups drive positive change. Our rich and diverse extra- curricular timetable can be found [here](#).

KS3

- > Ribblesdale Residential
- > Votes for Schools

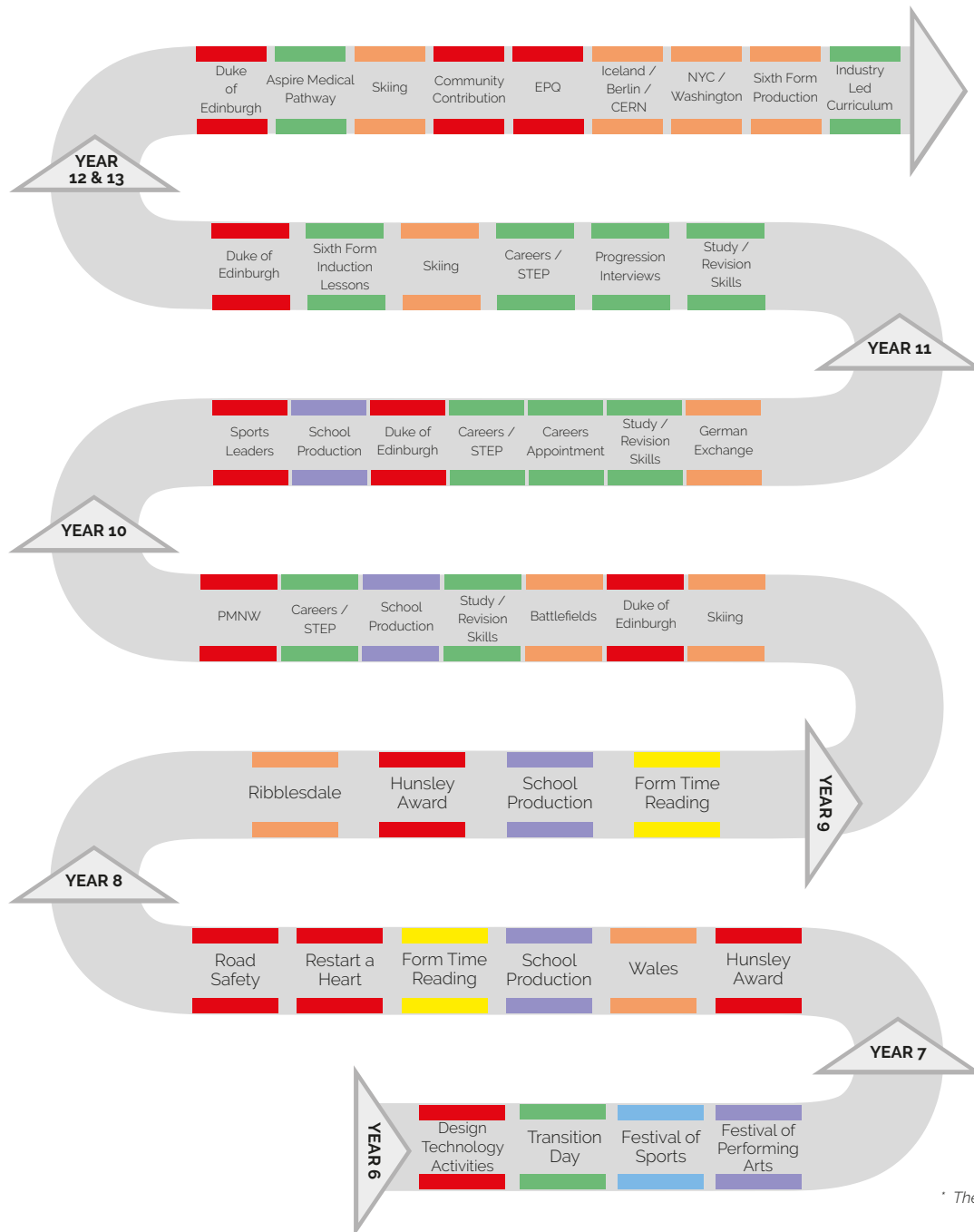
KS4

- > Sports Leaders
- > Votes for Schools

KS5

- > Industry Led Curriculum
- > Community Contribution

PERSONAL DEVELOPMENT JOURNEY



CORE

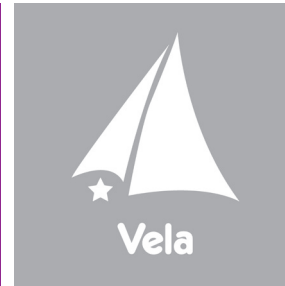
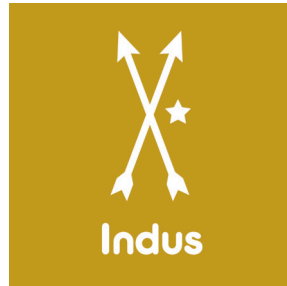
- Votes for Schools
- Pupil Leadership
- Sports Day
- Performing Arts Showcase
- Sports Fixtures
- Extra-Curricular Clubs
- Awareness Days and Religious Festivals
- Inter House Sports Competitions
- PSCE Curriculum
- Encounters with Career Providers

KEY



* The visits shown are ones that have previously been on offer and are not guaranteed.

HOUSE VALUES



Determination

Focussing your energy on finishing a task, especially when it's difficult

Patience

The ability to wait and to tolerate difficulties you face as you try to achieve your goals

Humility

Not boasting and being aware of how much you owe to others for your success

Wisdom

Making the right choices at the right time

Perseverance

Not giving up when facing difficulties

Kindness

Being friendly, generous, and considerate

Curiosity

Being eager to know or to learn something new

Honesty

Telling the truth and being sincere

Citizenship

Your involvement in your community and society

Creativity

Being able to create and to use the imagination

Generosity

To give something for someone else's benefit

Compassion

Showing care and concern for others

Resilience

Being able to recover quickly from struggles and setbacks

Collaboration

Working together for a common purpose to achieve a goal

Equity

Treating others equally

Self-discipline

The ability to control yourself and be very organised

Courage

Acting with bravery in fearful situations

Justice

Acting with fairness towards others by honouring rights and responsibilities

Critical Thinking

The ability to analyse and question information, making logical and well-thought-out judgments

Resourcefulness

The ability to find and use different ways to help achieve your goals

Service

The act of doing work that benefits other people

PSCHE CURRICULUM

Community and Personal Studies (PSCHE) is at the heart of our school's values and is embedded into all aspects of the curriculum, as well as being its own discrete subject. Our PSCHE curriculum enables our pupils to become healthy, safe, independent and responsible members of our communities. We deliver a curriculum that teaches pupils to become well-rounded individuals with a deep understanding of the world around them.

Pupils learn self-awareness, teamwork and how to form and maintain positive relationships. We promote self-worth by encouraging everyone to contribute to school life and the wider community. Our learners have knowledge and understanding of the fundamental British values of democracy, individual liberty, the rule of law and mutual respect and tolerance. We stimulate, challenge and nurture children's spiritual, moral, social and cultural curiosity.



Curriculum Lesson Overview



PSCHE Intent 2023



PSCHE Curriculum Map



TEAL PSCHE Curriculum Map



FORM TIME, ASSEMBLIES AND AWARENESS DAYS

FORM TIME

	YEAR 7	YEAR 8	YEAR 9	YEAR 10	YEAR 11
MONDAY	Assembly	Routines	Routines	Routines	Routines
TUESDAY	Routines	Assembly	Careers / Study Skills	PD / Careers	CP
WEDNESDAY	Reading	Reading	Assembly	CP	Careers / Study Skills
THURSDAY	Votesforschools	Votesforschools	CP	Assembly	Votesforschools
FRIDAY	Reading	Reading	Votesforschools	Votesforschools	Assembly



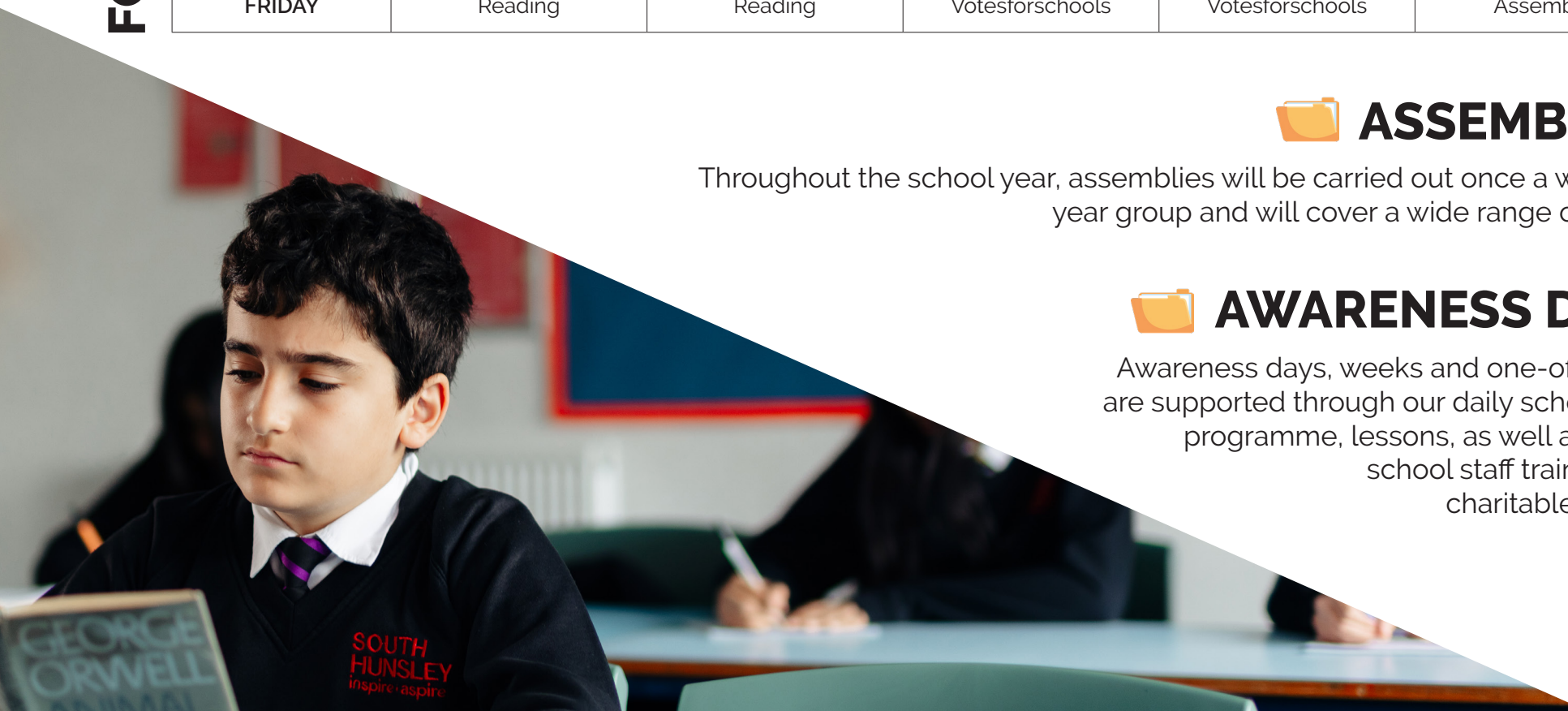
ASSEMBLIES

Throughout the school year, assemblies will be carried out once a week per year group and will cover a wide range of topics.



AWARENESS DAYS

Awareness days, weeks and one-off events are supported through our daily school form programme, lessons, as well as whole school staff training and charitable events.



RSE

(Relationships and Sex Education)

Today's children and young people are growing up in an increasingly complex world and living their lives seamlessly on and offline. This presents many positive and exciting opportunities, but also challenges and risks.

In this environment, children and young people need to know how to be **safe and healthy**, and how to manage their academic, personal and social lives in a positive way.

At secondary, teaching will build on the knowledge acquired at primary and develop further pupils' understanding of health, with an increased focus on risk areas such as drugs and alcohol, as well as introducing knowledge about intimate relationships and sex.



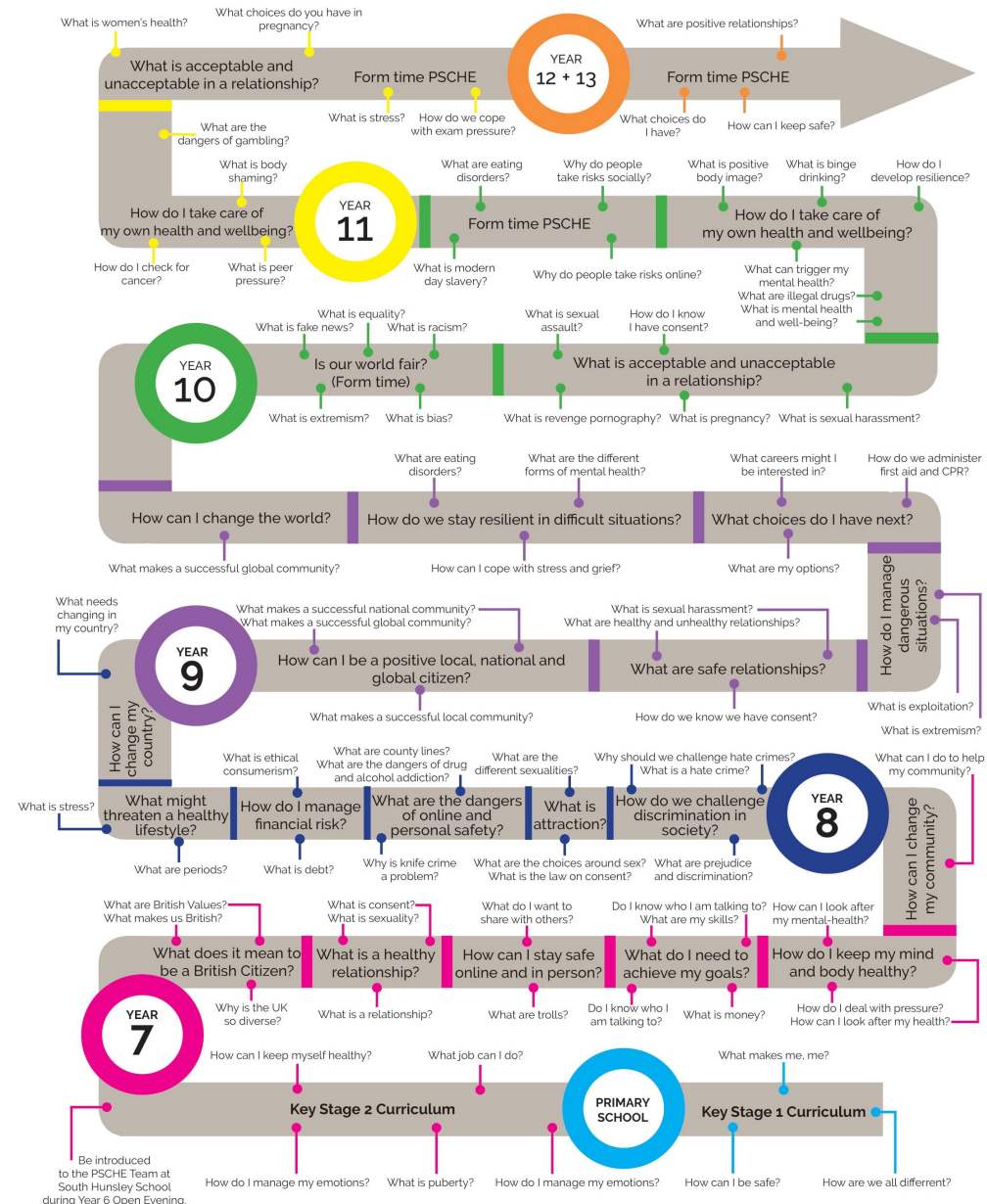
Relationships and Sex Education Policy
(Autumn 2023)



RSE Curriculum



COMMUNITY AND PERSON (PSCHE) CURRICULUM



A young girl with dark hair and bangs, wearing a dark blue school sweater over a white collared shirt and a red and black striped tie, is seated at a piano. She is looking towards the camera with a slight smile. The background is a blurred library with bookshelves. The image is partially obscured by a white diagonal shape that contains the text.

RS AND SMSC DEVELOPMENT

(Religious Studies and Spiritual, Moral, Social and Cultural Development)

RS enables learners to reflect upon and deepen their understanding of human culture, beliefs and thought. It is a quest for understanding the self and the nature of what it means to be human. It is important to understand the role religion plays in everyday life, whether we believe in a higher power or not, religion influences many aspects of our daily life.

Through SMSC lessons, the school aim to promote the spiritual, moral, social and cultural development of our pupils as well as actively promoting fundamental British values.

In line with our Hunsley Way Expectations, we strongly encourage our pupils to regard people of all faiths, races and cultures with respect and tolerance.



Religious Studies Curriculum Map



Assembly Rota 2023

CAREERS

Young people are faced with a complex set of demands when preparing for their future careers. South Hunsley aims to ensure that pupils are **self-confident, skilled** and **career-ready**. This is achieved through a comprehensive programme of activities to help them choose pathways that are right for them and to be able to manage their careers and sustain employability throughout their lives. Our programme starts in Year 7 through Year 13, and is based on the nationally recognised Gatsby Benchmarks.

The programme follows the eight Gatsby Benchmarks of Good Career Guidance which are:

- >> A stable careers programme
- >> Learning from career and labour market information
 - >> Addressing the needs of each pupil
 - >> Linking curriculum learning to careers
- >> Encounters with employers and employees
 - >> Experiences of workplaces
 - >> Encounters with further/higher education
 - >> Personal guidance



South Hunsley Careers

SOUTH HUNSLEY STUDENT UNION



Aims

- To provide a forum for pupils to discuss their views and opinions.
- To serve as a spokesperson for the concerns of year groups and individuals.
- To stimulate pupil interest in school activities and promote whole school and house values.
- To provide opportunities for discussion, information and consultation about matters of concern to the pupil body.

Pupil Year Leaders
(Sixth Form)

>>

Year Captains per
Year Group
(Lower School)

Roles and Responsibilities

Pupil Leadership Team

- Pupil representatives of the pupil body.
- Lead the Pupil Union and liaise with staff overseeing the Pupil Union.
- Ambassadors for the school at Open Evenings etc.
- Participate in fundraising events.
- Mentoring pupils.
- Meet with the Senior Leadership Team and staff about matters concerning the pupil body.

Pupil Year Leaders

- Pupil representatives of the year group and a committee / group.
- Support Heads of Year by visiting the year group office and forms throughout the week.
- Support tutors and mentor pupils.
- Support the Pupil Leadership Team in communicating notices and reviewing feedback from year surveys.
- Meet with Year Captains and report regularly to the Pupil Leadership Team.
- Ambassadors for the school at Open Evenings etc.
- Participate in fundraising events.

Year Captains

- Lower school pupil representatives of the year group.
- Support tutor groups.
- Support the Pupil Union in communicating notices and reviewing feedback from year surveys.
- Ambassadors for the school at Open Evenings etc.
- Participate in fundraising events.

VOTESFORSCHOOLS

Parent and Carer Information

VotesforSchools is a weekly current affairs-based voting platform designed to engage young people in political and social issues. Through weekly discussion and voting, not only are voters learning about the world around them, but they are also becoming active citizens and preparing for participating in their democratic processes as adults. Below are some great ways for you to get involved in the conversation!

1. Check out their website: At 4PM every Friday, the latest VoteTopic goes live. Go to www.votesforschools.com to see what voters will be debating in the coming school week.
2. Discuss the topic at home: Ask your child to give arguments for each side of the debate to encourage critical thinking – the weekly Home Information Sheet can help you with this. If you're not sure where to find it, please ask a member of staff to share it with you. Why not ask your child how they voted and why?
3. Discuss the results.
4. Brush up on your knowledge: read up on any topics your child is discussing or have discussed to see what your take on it is. For more sensitive topics, they also provide a list of useful resources and organisations where you or your child can find out more or seek support.
5. Share your ideas: Talk to your child about which issues they would like to see discussed at VotesforSchools.

ECO HUNSLEY

Pupils of all ages have the opportunity to join the Eco Hunsley committee, which is dedicated to creating sustainable initiatives for the school to reduce our carbon footprint. Projects include tree planting around the site, building bird boxes for local wildlife and running a second hand prom dress scheme.

We have also been awarded the Green Flag Award from the Eco-Schools programme, which is the largest educational programme on the planet.

CHANGE MAKERS

South Hunsley is committed to promoting equality, diversity and inclusion throughout its practice and creating a safe inclusive environment for all pupils and colleagues.

The Change Makers are a collaborative working group made up of pupils across all year groups who work together to create a diverse and equal community within the school.



VISITS

Our pupils enjoy a range of local, national and international experiences, including exchanges, sport and ski visits.

One of our most popular overseas visits is offered by our History department. The First World War Battlefields visit to France and Belgium is memorable for our Year 9 pupils, providing them with the chance to experience first-hand the landscape and atmosphere they've discussed in the classroom.

Pupils can take part in sports tours in the UK and abroad. These tours enable pupils to compete in tournaments and build on team work skills in some of the most recognised venues in the world. In addition, pupils have the chance to participate in residential visit to experience outdoor pursuits both in Wales and Ribblesdale. There are international skiing visits offered to pupils in every key stage.

We offer pupils a wide range of cultural experiences, exploring the arts, museums and theatres. Pupils are able to develop an understanding of British values and those of other cultures.

Pupils in the Sixth Form also benefit from a number of fantastic opportunities both in the UK and abroad to broaden their horizons.

Since 2018 we have also been proud to offer pupils in Year 9 and above the chance to complete the Duke of Edinburgh's Award.



SIXTH FORM ENRICHMENT

CORE ENRICHMENT OFFER

Study Skills Sessions

Upon entry into the Sixth Form, students will learn the specific skills needed to become a successful Sixth Form student. Students will learn how to revise and maximise their potential for the terminal examinations in Year 13.

Emergency First Aid

Students will be provided with the opportunity to gain a first-aid qualification, an important skill and vital qualification for the workplace and within the wider community.

UCAS and University Support

All students will be provided with guidance and information about going to university so they can make informed decisions about their Post-18 destinations. Those who choose the university route will be provided with specific advice and guidance on how to apply and choose a university. Students will be supported through the process by a dedicated tutor. Students will have the opportunity to visit campuses and get a feel for university life.

Community and Personal Sessions (CP)

These tutorials and super-curricular opportunities support students' personal development by helping to prepare students to manage their current and future lives. CP tutorials are linked to five key areas: identity and diversity, relationships and sex education, finance and careers, risk and safety, and healthy lifestyles.

Community Contribution

All students take part in an aspect of community contribution throughout their time in the Sixth Form. Students partake in 36 hours per year in an area linked to the curriculum or their own personal interest. This allows students to gain vital employment skills, enhance a CV and a UCAS application. At South Hunsley, we believe that students should give something back to the wider school community.

Apprenticeship Support and Next Steps

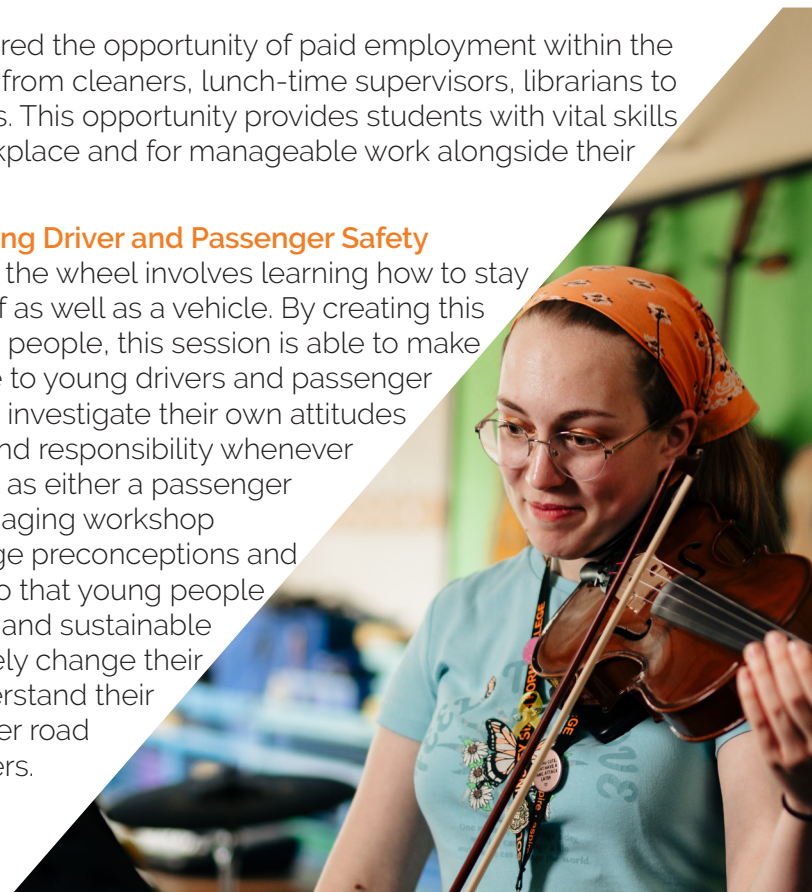
All students will be provided with guidance and information surrounding apprenticeships so they can make informed decisions about their Post-18 destinations. Those who choose the apprenticeship route will be provided with specific advice and guidance on how to find and apply for apprenticeships. Students will be supported through the Industry-Led Programme on how to research, apply and the skills needed for interview. Students will have the opportunity to meet local employers and receive regular apprenticeship vacancy updates.

Paid Employment

All students are offered the opportunity of paid employment within the Sixth Form, ranging from cleaners, lunch-time supervisors, librarians to sport club assistants. This opportunity provides students with vital skills needed for the workplace and for manageable work alongside their academic studies.

Braking Point – Young Driver and Passenger Safety

Staying safe behind the wheel involves learning how to stay in control of yourself as well as a vehicle. By creating this awareness in young people, this session is able to make a positive difference to young drivers and passenger behaviour. Students investigate their own attitudes to personal safety and responsibility whenever they are in a vehicle as either a passenger or young driver. Engaging workshop techniques challenge preconceptions and develop solutions so that young people can make informed and sustainable decisions to positively change their behaviour and understand their responsibility to other road users and passengers.



OPTIONAL ENRICHMENT OFFER

Student Leadership

We offer students the opportunity to become a student leader, supporting the work of the school in making improvements in relation to the Sixth Form and wider school experience. Students will have the opportunity to support students in KS3 and KS4 by chairing meetings and listening to their needs. We offer the opportunity to become Head Students, part of the wider leadership teams, and specific roles in mental health and well-being, transition, charity and community lead, inclusion lead, mentoring, and eco-school lead.

HE+

The HE+ programme is a super-curricular programme provided by Cambridge University. The programme aims to widen participation to higher education. The programme is for students who are academically able to make a competitive application to selective universities. Where places are restricted, first priority on this programme will therefore be given to prospective students according to the following criteria: students who are in care; students who are eligible for free school meals or in receipt of the 16-19 bursary; Black African, or Black Caribbean; Bereavement; asylum seeker or refugee.

Core Maths

This qualification is designed for students who achieve at least a good pass at GCSE Maths but who choose not to continue with A Level Maths. The course enables students to study a maths curriculum that

is integrated with other areas of their study, develop mathematical modelling, evaluating and reasoning skills, solve substantial, real life problems, enjoy maths and develop confidence in using mathematics.

ICDL

ICDL Advanced is for students who want to keep up their valuable IT skills and want to learn how to use the software applications effectively for the production of professional documents for use in college, university or work situations. Each unit is taught in a practical way, ensuring that students develop the necessary skills to meet their requirements of the course, but also to help them develop the skills necessary for their future careers.

EPQ

The EPQ allows students to lead their own projects. Students get to plan and carry out research on a topic they've chosen that isn't covered by their other qualifications. The EPQ is designed for students to become more critical, reflective and independent learners, develop and apply decision making and problem-solving skills, increase their planning, research, analysis, synthesis, evaluation and presentation skills.

Aspire Medics

We will cover the following: What's it like to be a doctor?; Working in the NHS; Other job roles in a hospital; What do I need to be doing in Year 12, including volunteering; Being successful in UCAT; Medical issues and ethics for wider reading; Pathways to medicine; Visiting speakers including students; Hospital Doctors and GPs; Writing a good personal statement; Mock interviews. It is also suitable for those interested in dentistry and veterinary science.

Aspire Oxbridge

We will provide detailed information about Oxford and Cambridge Universities and their highly competitive application process. We will provide guidance and support in the application process and interview preparation.



Industry-Led Curriculum

This programme is designed to develop the next generation of world-class employees who possess the highest level of academic knowledge, technical ability and employability skills to not only apply for the nation's most competitive job roles, but also support the government's strategy of boosting national productivity and global economic growth.

Sports Clubs

Students have the opportunity to take part in a range of different sporting activities throughout their two years. Clubs are run on the needs of the students.

Sixth Form Production

Students in the Sixth Form have the opportunity to create their own production. Students also have the opportunity to take part in the whole school production. This programme allows students to become directors, lighting production assistants and choreographers.

Music Clubs

Students can take part in extra-curricular activities run by the school's music department. This can include the student band, supporting younger students and taking part in wider-school productions.

Duke of Edinburgh Award

The Duke of Edinburgh is non-competitive and open to all young people – it is about setting personal challenges and pushing personal boundaries. There are three awards in the Duke of Edinburgh programme which, when successfully completed, lead to a Bronze, Silver and then Gold Award. Through their Duke of Edinburgh, students will make friends and memories and build traits like confidence, resilience and self-esteem, which can benefit mental health.

They will gain skills and attributes for work and life, such as problem-solving, team-working and self-motivation – and they will achieve an award that is recognised by top employers and can help them stand out when applying for university or jobs.

Sports Leaders Award

Students have the opportunity to participate in the Sports Leaders Award. This allows students to support the running of extra-curricular activities and teaches students the importance of teamwork.

Arts Leader Award

Students have the opportunity to participate in the Arts Leader Award. This allows students to support the running of extra-curricular activities and teaches students the importance of teamwork.



SOUTH HUNSLEY

inspire · aspire

East Dale Road
Melton, North Ferriby
East Yorkshire
HU14 3HS

@SouthHunsley @HunsleySixth
www.southhunsley.org.uk
enquiries@southhunsley.org.uk
01482 631208

